

VOR BJB 109.8	APP CRS 123°	Rwy Idg 4494 TDZE 882 Apt Elev 887
-------------------------	------------------------	---

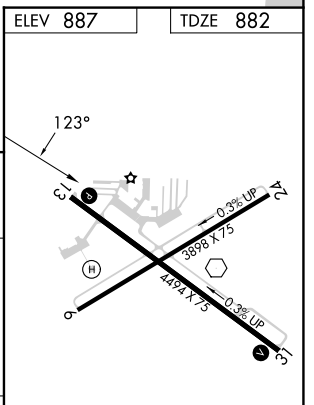
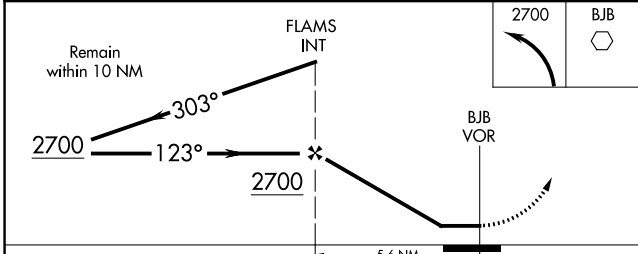
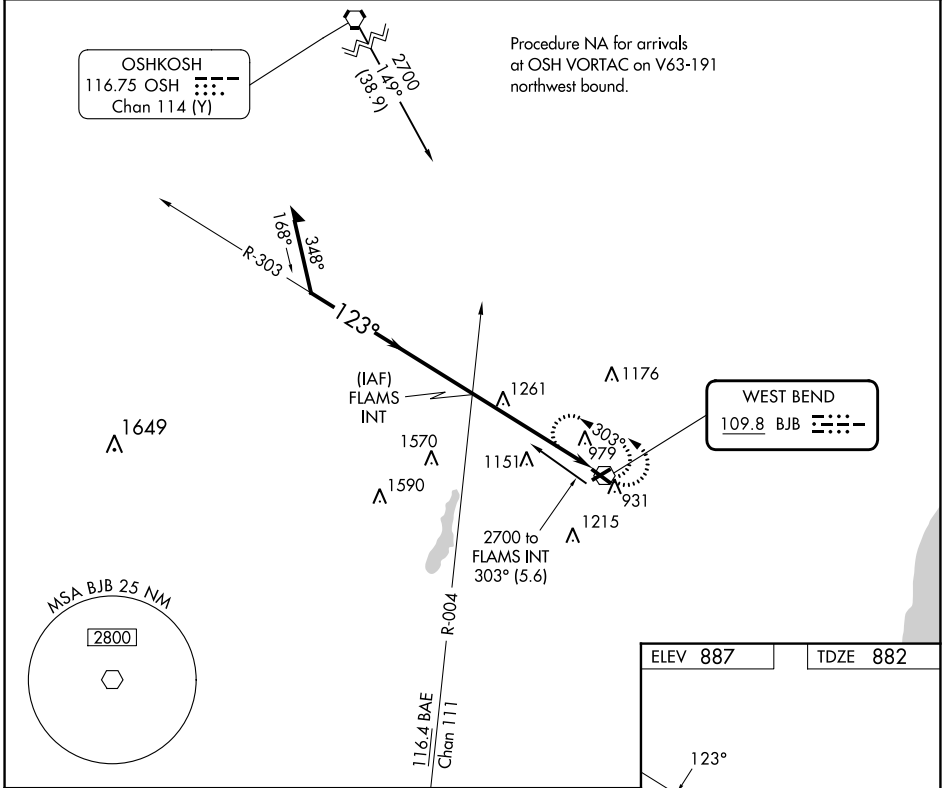
VOR RWY 13

WEST BEND MUNI (E/TB)

⚠ Rwy 13 helicopter visibility reduction below 3/4 SM NA. When local altimeter setting not received, use Lawrence J Timmerman altimeter setting and increase all MDAs 80 feet and visibility Cat C/D 1/4 SM.

⚠ MISSED APPROACH: Climbing left turn to 2700 in BJB VOR holding pattern.

AWOS-3 120.0	MILWAUKEE APP CON 125.35 307.0	CLNC DEL 124.75	UNICOM 123.05 (CTAF) 0
------------------------	--	---------------------------	----------------------------------



CATEGORY	A	B	C	D
S-13	1540-1	658 (700-1)	1540-1 3/4 658 (700-1 3/4)	1540-2 658 (700-2)
CIRCLING	1540-1	653 (700-1)	1560-2 673 (700-2)	1560-2 1/4 673 (700-2 1/4)

REIL Rwy 13 and 31 0
MIRL Rwy 6-24 and 13-31 0

EC-3, 11 JUL 2024 to 08 AUG 2024

EC-3, 11 JUL 2024 to 08 AUG 2024