

APP CRS	Rwy Idg	N/A
109°	TDZE	N/A
	Apt Elev	1510

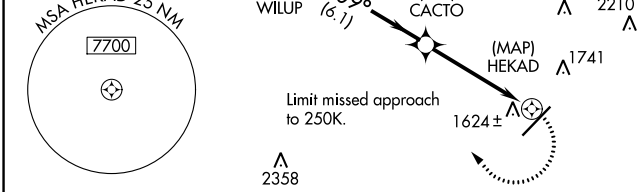
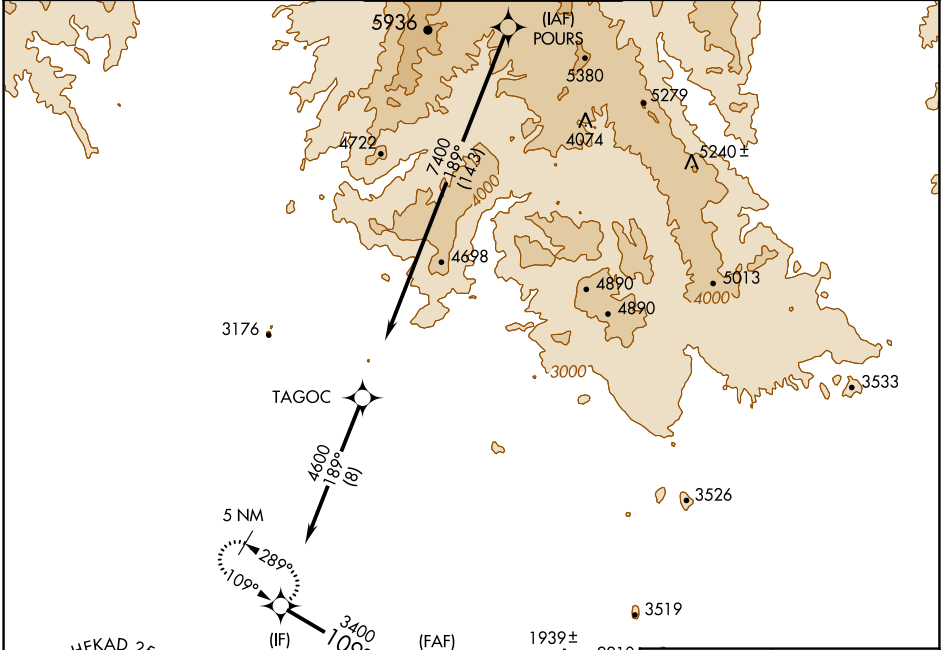
# RNAV (GPS)-D

## SCOTTSDALE (SDL)

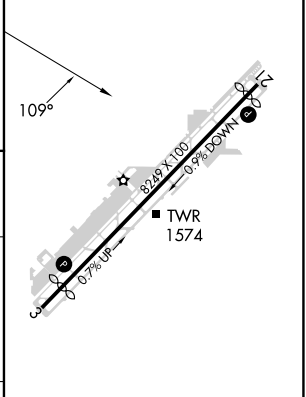
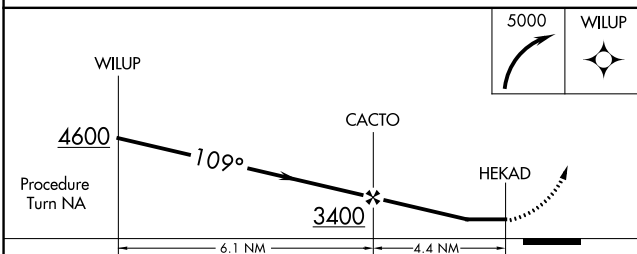
**▼** When VGSI inoperative, circling Rwy 21 NA at night. When local altimeter setting not received, use Phoenix Sky Harbor Intl altimeter setting and increase all MDA 100 feet and increase visibility Cat C ¼ SM. DME/DME RNP-0.3 NA.

**MISSED APPROACH:** Climbing right turn to 5000 direct WILUP and hold, continue climb-in-hold to 5000.

ATIS ★	PHOENIX APP CON	SCOTTSDALE TOWER ★	GND CON	CLNC DEL
118.6	120.7 239.0	119.9 (CTAF) 0	121.6	124.8



ELEV 1510	<b>D</b>
-----------	----------



CATEGORY	A	B	C	D
CIRCLING	2080-1 570 (600-1)	2100-1 590 (600-1)	2460-2¾ 950 (1000-2¾)	3300-3 1790 (1800-3)

MIRL Rwy 3-21 **0**  
REIL Rwy 3 and 21 **0**

SW-4, 11 JUL 2024 to 08 AUG 2024

SW-4, 11 JUL 2024 to 08 AUG 2024