

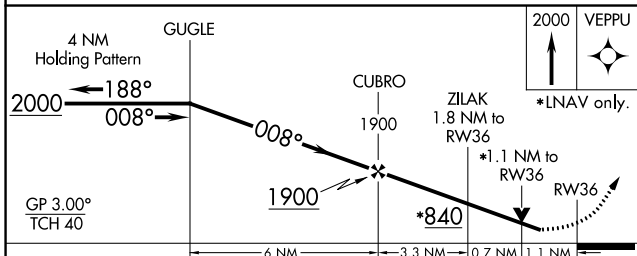
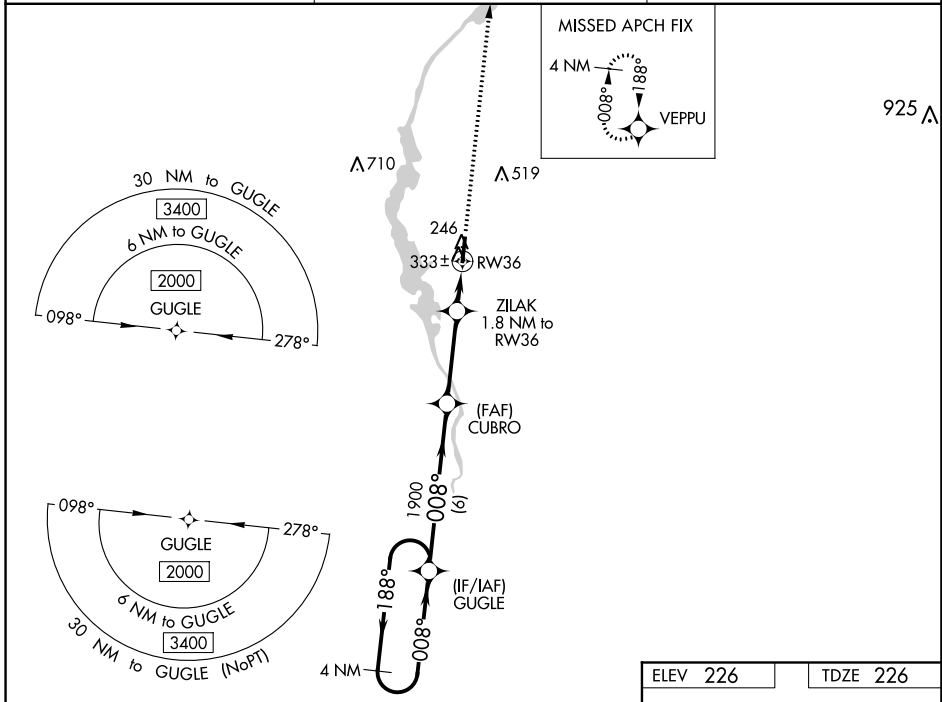
WAAS CH <b>70414</b> <b>W36A</b>	APP CRS <b>008°</b>	Rwy Idg TDZE <b>226</b> Apt Elev <b>226</b>	<b>4999</b>
--	------------------------	---	-------------

# RNAV (GPS) RWY 36

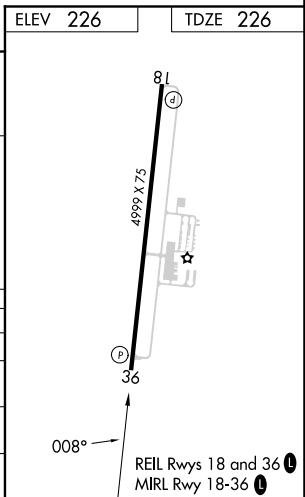
MONROE COUNTY (M40)

RNP APCH.  
 For uncompensated Baro-VNAV systems, LNAV/VNAV NA below -15°C or above 54°C. Rwy 36 helicopter visibility reduction below ¾ SM NA.  
 MISSED APPROACH: Climb to 2000 direct VEPPU and hold.

AWOS-3P <b>118.475</b>	COLUMBUS APP CON ★ <b>126.075 239.25</b>	UNICOM <b>122.8 (CTAF) 0</b>
---------------------------	---	---------------------------------



CATEGORY	A	B	C	D
LPV DA		506-7/8	280 (300-7/8)	
LNAV/VNAV DA		624-11/8	398 (400-11/8)	
LNAV MDA		600-1	374 (400-1)	
CIRCLING	660-1 434 (500-1)	680-1 454 (500-1)	820-11/2 594 (600-11/2)	860-2 634 (700-2)



SC-4, 11 JUL 2024 to 08 AUG 2024

SC-4, 11 JUL 2024 to 08 AUG 2024