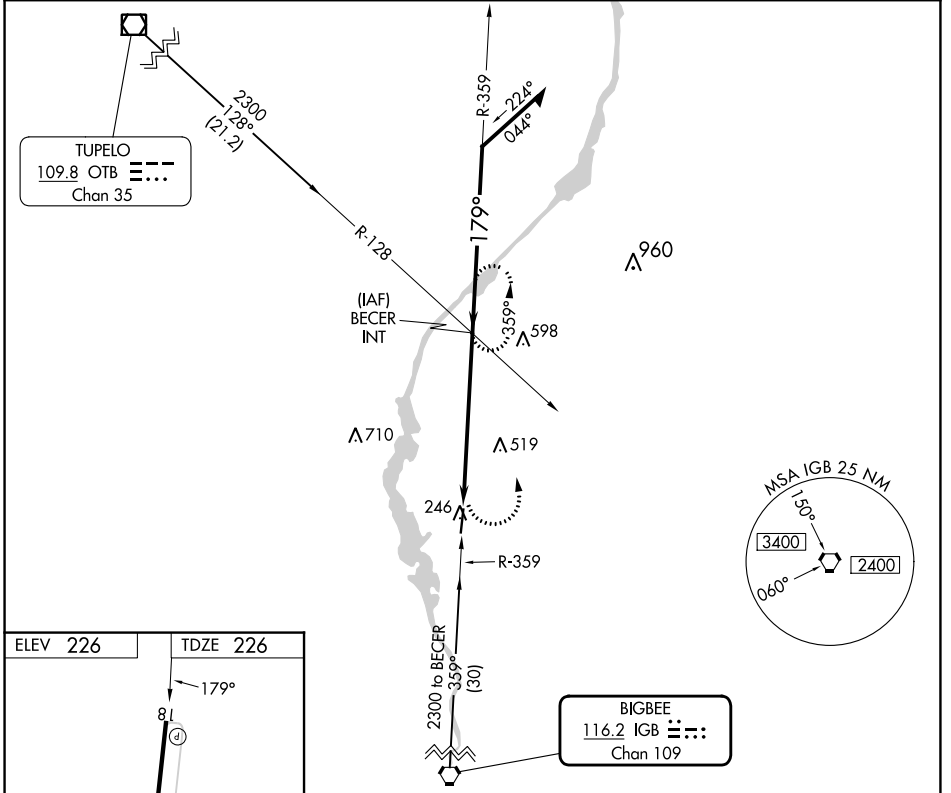


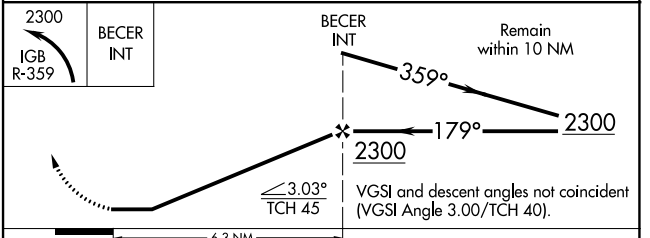
VORTAC IGB	APP CRS	Rwy Idg	4999
116.2	179°	TDZE	226
Chan 109		Apt Elev	226

VOR RWY 18
MONROE COUNTY (M40)

MISSED APPROACH: Climbing left turn to 2300 on IGB VORTAC R-359 to BECER INT and hold.		
AWOS-3P 118.475	COLUMBUS APP CON * 126.075 239.25	UNICOM 122.8 (CTAF) 0



ELEV 226	TDZE 226
REIL Rwy 18 and 36 MIRL Rwy 18-36 FAF to MAP 6.3 NM	
Knots	60 90 120 150 180
Min:Sec	6:18 4:12 3:09 2:31 2:06



CATEGORY	A	B	C	D
S-18	880-1	654 (700-1)	880-1 $\frac{7}{8}$	654 (700-1 $\frac{7}{8}$)
<input checked="" type="checkbox"/> CIRCLING	880-1	880-1 $\frac{1}{4}$	880-1 $\frac{7}{8}$	880-2
	654 (700-1)	654 (700-1 $\frac{1}{4}$)	654 (700-1 $\frac{7}{8}$)	654 (700-2)

SC-4, 11 JUL 2024 to 08 AUG 2024

SC-4, 11 JUL 2024 to 08 AUG 2024