

WAAS CH 61008 W04A	APP CRS 038°	Rwy Idg 6032 TDZE 511 Apt Elev 529
----------------------------------------	------------------------	---------------------------------------------------------------

RNAV (GPS) RWY 4

TALLADEGA MUNI (ASN)

RNP APCH - GPS.

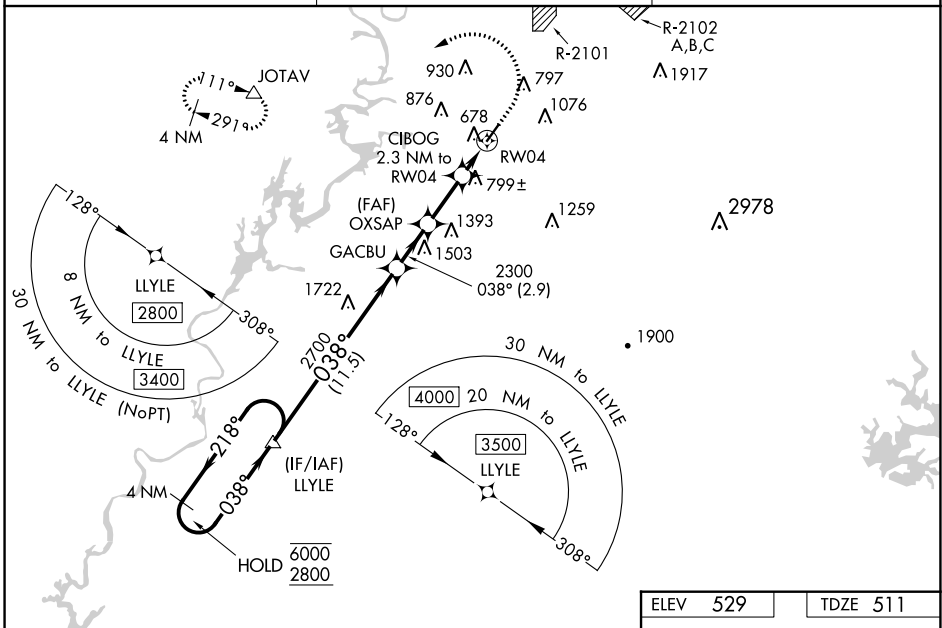
⚠ For uncompensated Baro-VNAV systems, LNAV/VNAV NA below -16°C or above 54°C.

MISSED APPROACH: Climb to 1300 then climbing left turn to 3700 direct JOTAV and hold, continue climb-in-hold to 3700.

AWOS-3PT
118.425

BIRMINGHAM APP CON
132.15 285.45

UNICOM
122.8 (CTAF) 0

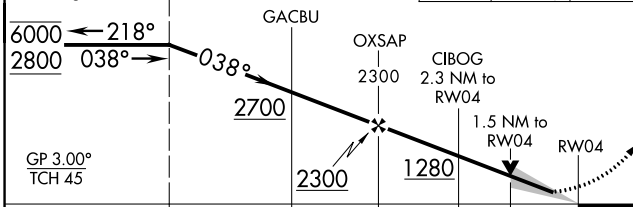


SE-4, 11 JUL 2024 to 08 AUG 2024

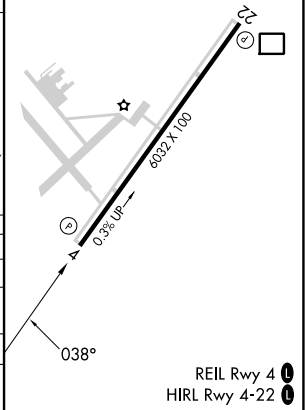
SE-4, 11 JUL 2024 to 08 AUG 2024

ELEV 529	TDZE 511
-----------------	-----------------

VGSI and RNAV glidepath not coincident (VGSI Angle 3.00/TCH 65).
 4 NM Holding Pattern LLYLE
 1300 3700 JOTAV



CATEGORY	A	B	C	D
LPV DA		711- ³ / ₄	200 (200- ³ / ₄)	
LNAV/VNAV DA		884-1	373 (400-1)	
LNAV MDA	1060-1	549 (600-1)	1060-1 ⁵ / ₈	549 (600-1 ⁵ / ₈)
C CIRCLING	1140-1 611 (700-1)	1180-1 651 (700-1)	1380-2 ¹ / ₂ 851 (900-2 ¹ / ₂)	1500-3 971 (1000-3)



REIL Rwy 4 **0**
HIRL Rwy 4-22 **0**