

VOR/DME BSV 114.05 Chan 87 (Y)	APP CRS 115°	Rwy Idg 5189 TDZE 1113 Apt Elev 1136
--	------------------------	---

VOR RWY 10

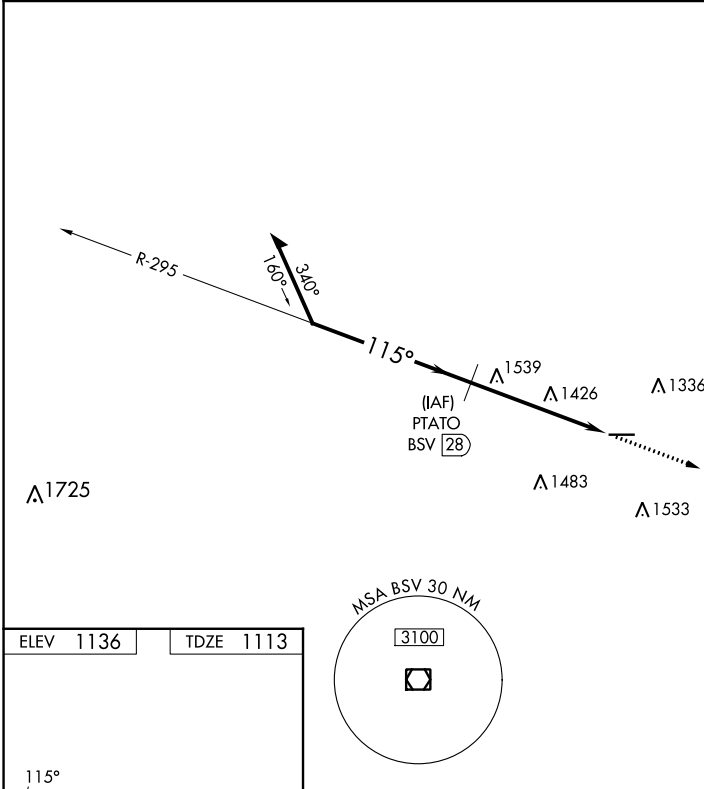
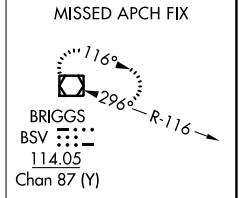
WAYNE COUNTY (BJJ)

DME required.

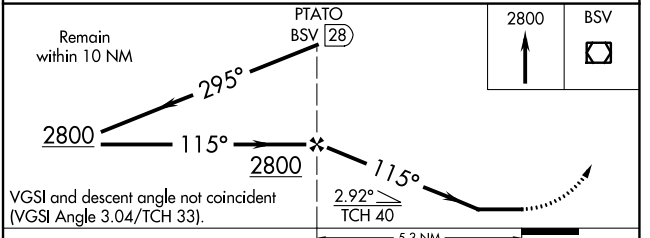
▼ When local altimeter setting not received, use Akron-Canton Rgnl altimeter setting and increase all MDA 60 feet; increase S-10 Cat C/D and Circling Cat C/D visibility ¼ SM. Rwy 10 helicopter visibility reduction below ¼ SM NA.

⚠ MISSED APPROACH: Climb to 2800 direct BSV VOR/DME and hold.

ASOS 118.075	CLEVELAND APP CON ★ 125.5 371.875	CLNC DEL 121.75	UNICOM 122.975 (CTAF) 1
------------------------	---	---------------------------	--



ELEV 1136	TDZE 1113
------------------	------------------



REIL Rwys 10 and 28 1					
HIRL Rwy 10-28 1					
FAF to MAP 5.3 NM					
Knots	60	90	120	150	180
Min:Sec	5:18	3:32	2:39	2:07	1:46
C CIRCLING	1840-1 704 (800-1)	1840-1¼ 704 (800-1¼)	1840-2 704 (800-2)	1840-2¼ 704 (800-2¼)	

EC-2, 11 JUL 2024 to 08 AUG 2024

EC-2, 11 JUL 2024 to 08 AUG 2024