

LOC/DME I-JLS 110.3	APP CRS 051°	Rwy Idg TDZE Apt Elev	5002 193 193
-------------------------------	------------------------	-----------------------------	---

LOC RWY 5

TRI CITIES EXEC/DINWIDDIE COUNTY (PTB)

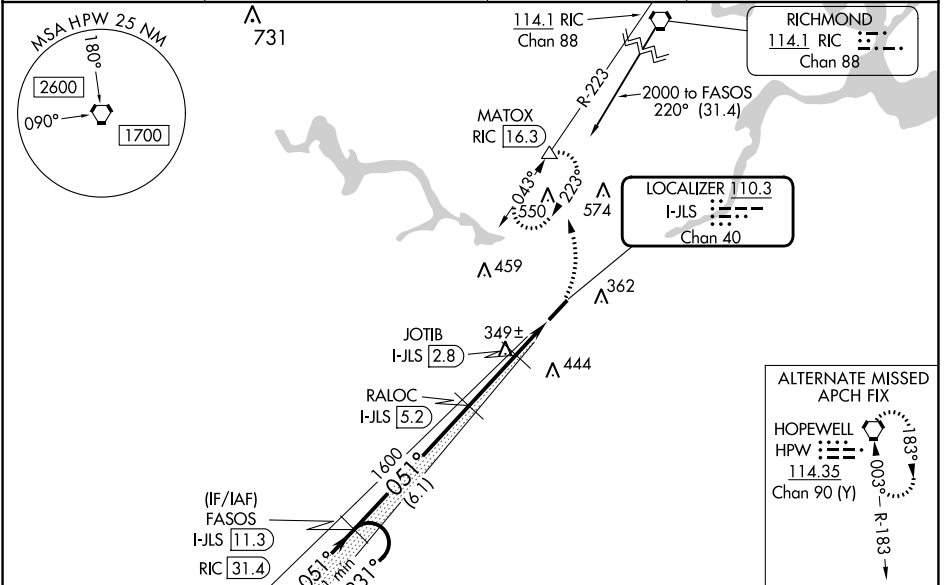
⚠ **⚠** DME required. Helicopter visibility reduction below 3/4 SM NA. VDP NA when using Richmond Exec/Chesterfield County altimeter setting. When local altimeter setting not received, use Richmond Exec/Chesterfield County altimeter setting and increase all MDA 40 feet; increase S-LOC 5 Cat C visibility 1/8 mile and Circling Cat C visibility 1/4 mile. For inop ODALS, increase S-LOC 5 Cat C visibility to 1 1/8 mile. Inop table does not apply to S-LOC 5 Cat A and B. Inop table does not apply to S-LOC Cat A and B when using Richmond Exec/Chesterfield County altimeter setting.

ODALS

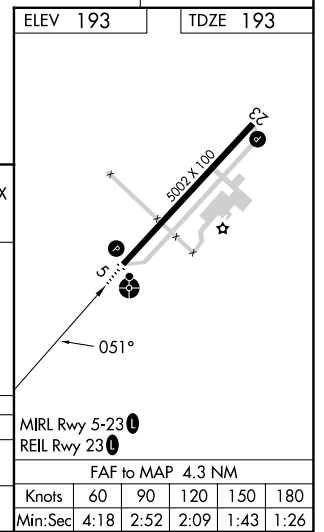
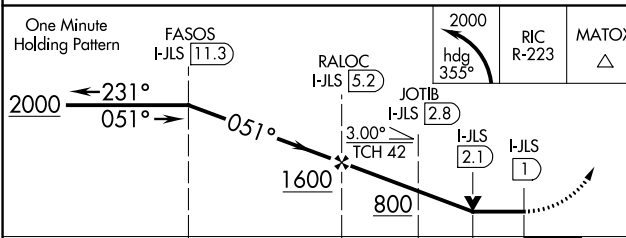


MISSED APPROACH:
Climbing left turn to 2000 on heading 355° and on RIC VORTAC R-223 to MATOX/RIC 16.3 DME and hold.

AWOS-3 133.325	POTOMAC APP CON 126.75 307.2	GCO 135.075	UNICOM 122.7 (CTAF) 0
--------------------------	--	-----------------------	---------------------------------



DME REQUIRED



CATEGORY	A	B	C	D	MIRL Rwy 5-23 REIL Rwy 23
S-5	600-1 407 (500-1)			NA	FAF to MAP 4.3 NM
CIRCLING	680-1	487 (500-1)	760-1 1/2 567 (600-1 1/2)	NA	Knots: 60, 90, 120, 150, 180 Min:Sec: 4:18, 2:52, 2:09, 1:43, 1:26

LOC RWY 5

NE-3, 11 JUL 2024 to 08 AUG 2024

NE-3, 11 JUL 2024 to 08 AUG 2024