

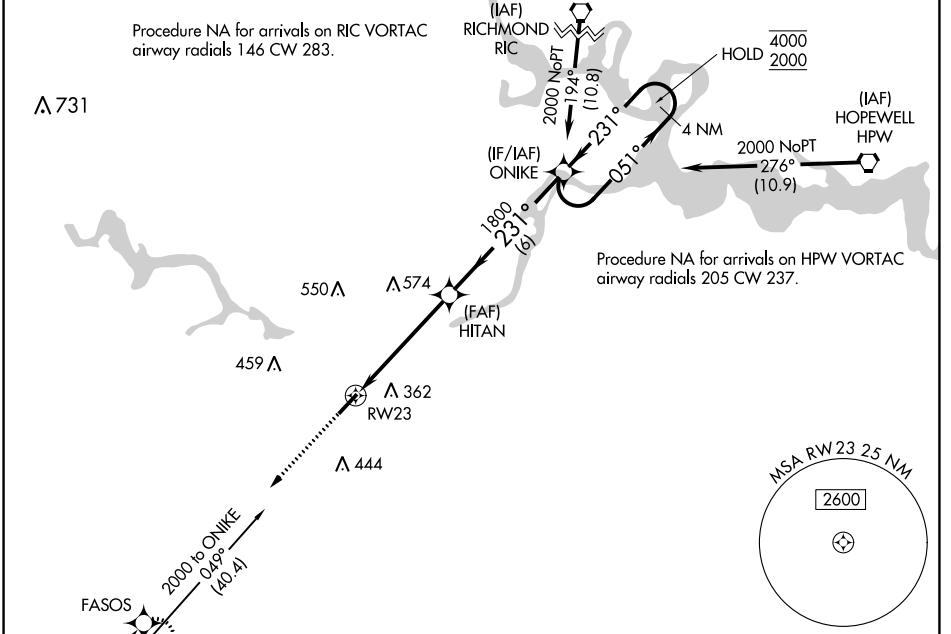
WAAS CH 86706 W23A	APP CRS 231°	Rwy Idg TDZE 191 Apt Elev 193	5002
--	------------------------	---	-------------

RNAV (GPS) RWY 23

TRI CITIES EXEC/DINWIDDIE COUNTY (PTB)

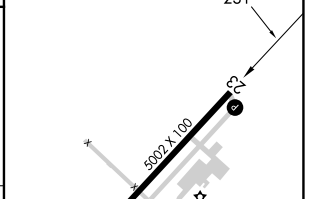
RNP APCH - GPS.		MISSED APPROACH: Climb to 2000 direct FASOS and hold.	
▼ ▲ For uncompensated Baro-VNAV systems, LNAV/VNAV NA below -15°C or above 54°C.			

AWOS-3 133.325	POTOMAC APP CON 126.75 307.2	GCO 135.075	UNICOM 122.7 (CTAF) 0
--------------------------	--	-----------------------	---------------------------------

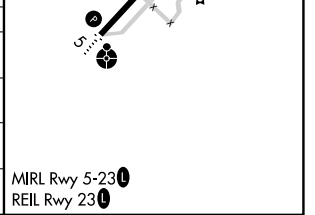


ELEV 193	TDZE 191
----------	----------

2000	FASOS	HITAN	ONIKE	4 NM Holding Pattern
↑	◆	◆	◆	◆
	1.2 NM to RW23	1800	1800	051° → 4000 ← 231° 2000
				GP 3.00 TCH 40
	1.2 NM	3.8 NM	6 NM	



CATEGORY	A	B	C	D
LPV DA	441-3/4	250 (300-3/4)		NA
LNAV/VNAV DA	490-7/8	299 (300-7/8)		NA
LNAV MDA	600-1	409 (500-1)	600-1 1/8 409 (500-1 1/8)	NA
CIRCLING	680-1	487 (500-1)	760-1 1/2 567 (600-1 1/2)	NA



NE-3, 11 JUL 2024 to 08 AUG 2024

NE-3, 11 JUL 2024 to 08 AUG 2024