

APP CRS	Rwy Idg	<b>5009</b>
<b>137°</b>	TDZE	<b>494</b>
	Apt Elev	<b>494</b>

# RNAV (GPS) RWY 14

KOSCIUSKO-ATTALA COUNTY (OSX)

RNP APCH - GPS.

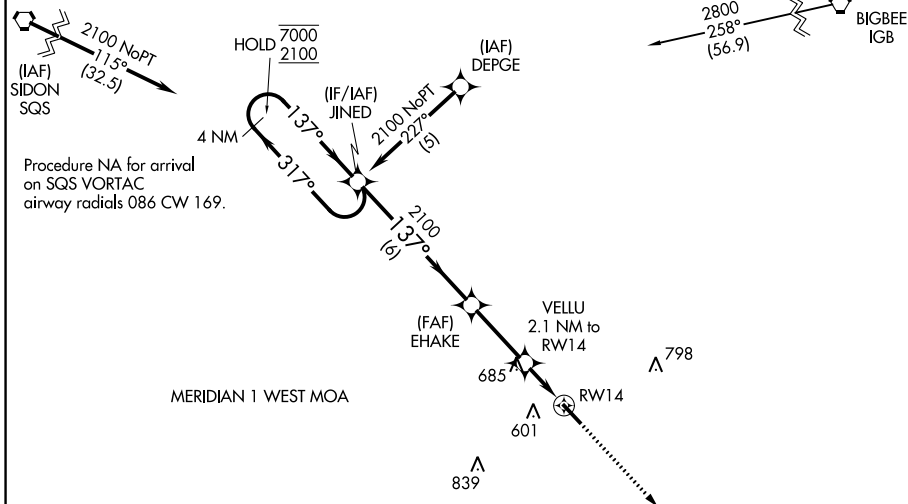
**NA** Rwy 14 helicopter visibility reduction below 1 SM NA. Procedure NA at night. Use Philadelphia altimeter setting; when not received, use Greenwood altimeter setting and increase all MDAs 80 feet, increase visibility LNAV Cat C ¼ SM and Circling Cat C ¾ SM.

MISSED APPROACH: Climb to 2200 direct GUDRE and hold.

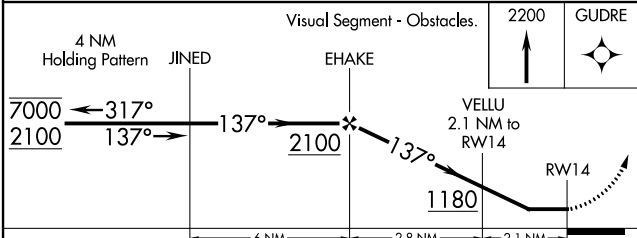
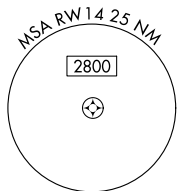
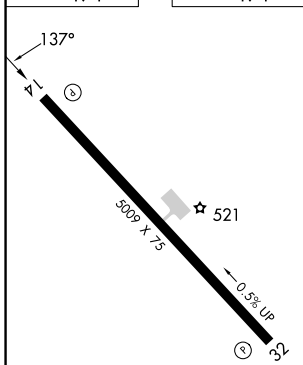
MPE AWOS-3P  
**118.725**

MEMPHIS CENTER  
**132.75 263.0**

CTAF  
**122.9**



ELEV	<b>494</b>	TDZE	<b>494</b>
------	------------	------	------------



CATEGORY	A	B	C	D
LNAV MDA	1020-1	526 (600-1)	1020-1½ 526 (600-1½)	NA
CIRCLING	1020-1	526 (600-1)	1160-1¾ 666 (700-1¾)	NA

SC-4, 11 JUL 2024 to 08 AUG 2024

SC-4, 11 JUL 2024 to 08 AUG 2024