

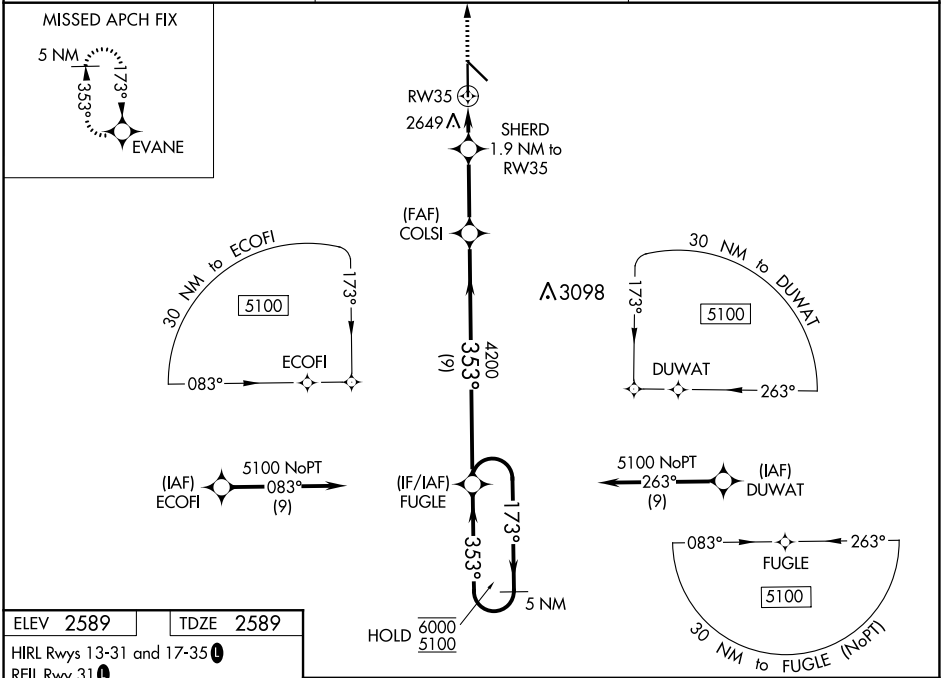
WAAS CH 81917 W35A	APP CRS 353°	Rwy Idg TDZE Apt Elev	6824 2589 2589
--	------------------------	-----------------------------	---

RNAV (GPS) RWY 35

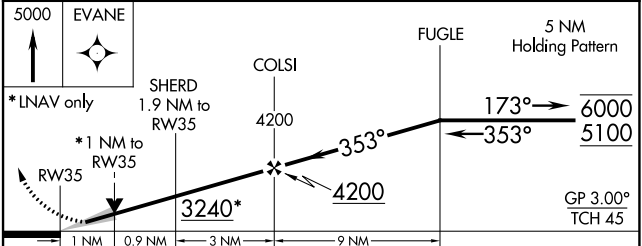
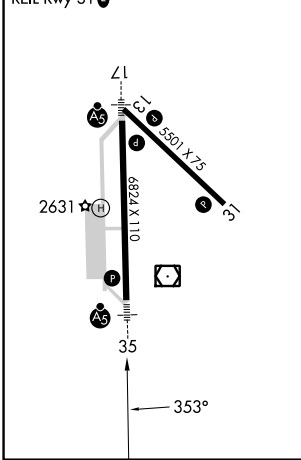
AINSWORTH RGNL (A.N.W)

RNP APCH.	MALSR 	MISSED APPROACH: Climb to 5000 direct EVANE and hold.
<p>▽ For uncompensated Baro-VNAV systems, LNAV/VNAV NA below -20°C or above 54°C. For inop ALS, increase LNAV/VNAV all Cats visibility to 3/4 SM and LNAV Cats C and D visibility to 1 SM.</p>		

AWOS-3 118.325	DENVER CENTER 127.95 338.2	UNICOM 122.8 (CTAF)
--------------------------	--------------------------------------	-------------------------------



ELEV 2589	TDZE 2589
HIRL Rwy 13-31 and 17-35	
REIL Rwy 31	



CATEGORY	A	B	C	D
LPV DA	2789-1/2		200 (200-1/2)	
LNAV/VNAV DA	2839-1/2		250 (300-1/2)	
LNAV MDA	2960-1/2 371 (400-1/2)		2960-5/8 371 (400-5/8)	
C CIRCLING	3000-1 411 (500-1)	3040-1 451 (500-1)	3040-1 1/2 451 (500-1 1/2)	3200-2 611 (700-2)

NC-2, 11 JUL 2024 to 08 AUG 2024

NC-2, 11 JUL 2024 to 08 AUG 2024