
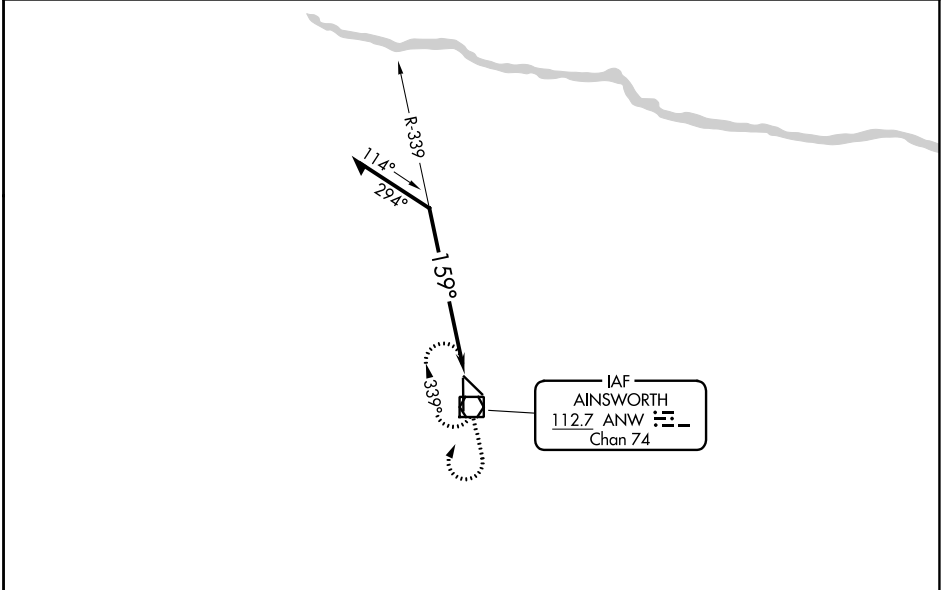


VOR/DME ANW 112.7 Chan 74	APP CRS 159°	Rwy Idg TDZE Apt Elev	6824 2589 2589
---	------------------------	-----------------------------	---

VOR RWY 17
AINSWORTH RGNL (A.N.W)

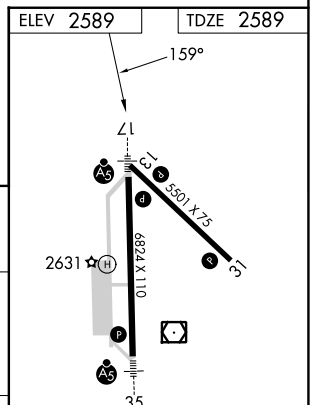
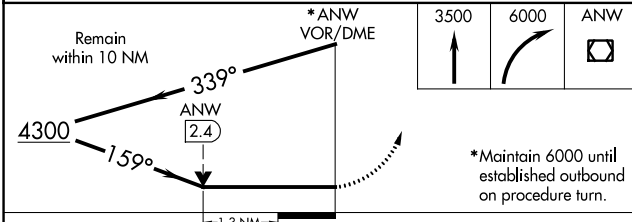
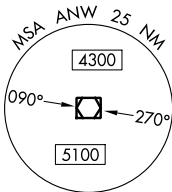
▼	MALSR 	MISSED APPROACH: Climb to 3500 then climbing right turn to 6000 direct ANW VOR/DME and hold.
---	--	--


AWOS-3 118.325	DENVER CENTER 127.95 338.2	UNICOM 122.8 (CTAF) 
--------------------------	--------------------------------------	---




NC-2, 11 JUL 2024 to 08 AUG 2024

NC-2, 11 JUL 2024 to 08 AUG 2024



CATEGORY	A	B	C	D
S-17	3060-1/2	471 (500-1/2)	3060-3/4 471 (500-3/4)	3060-1 471 (500-1)
 CIRCLING	3060-1	471 (500-1)	3060-1 1/2 471 (500-1 1/2)	3200-2 611 (700-2)

HIRL Rwys 13-31 and 17-35 
REIL Rwy 31 