

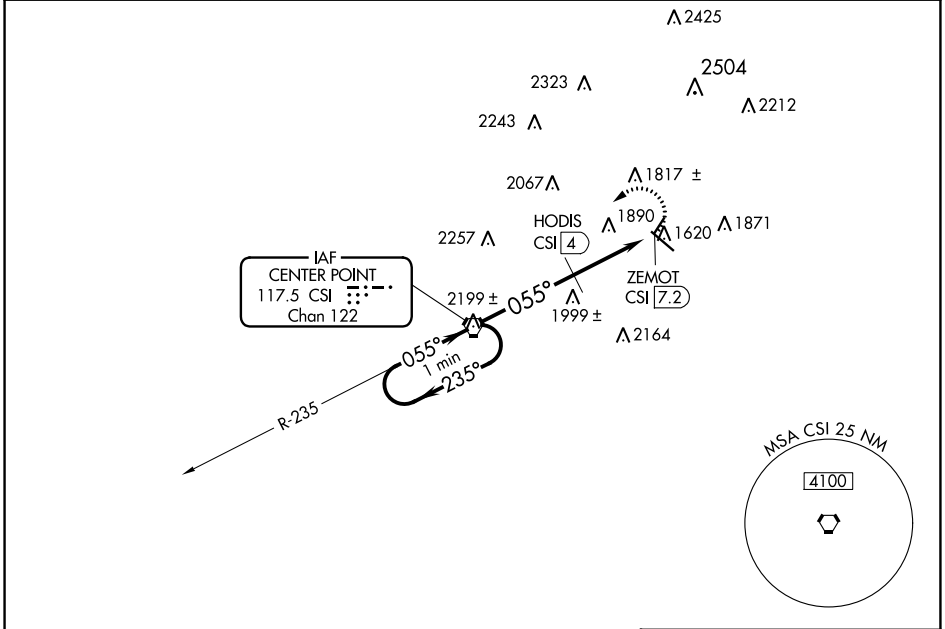
VORTAC CSI 117.5 Chan 122	APP CRS 055°	Rwy Idg TDZE Apt Elev 1617	N/A N/A 1617
---	------------------------	--	--------------------

VOR-A

KERRVILLE MUNI/LOUIS SCHREINER FLD (ERV)

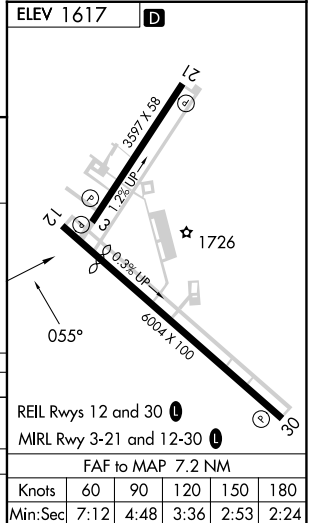
▼ When local altimeter setting not received, use Fredericksburg altimeter setting and increase all MDAs 60 feet, increase Cat C visibility ¼ SM and HODIS fix minimums Cat C visibility ¼ SM.
▲ MISSED APPROACH: Climbing left turn to 4000 direct CSI VORTAC.

AWOS-3 118.125	HOUSTON CENTER 134.95 269.4	CLNC DEL 134.95	UNICOM 122.7 (CTAF) 0
--------------------------	---------------------------------------	---------------------------	---------------------------------



SC-3, 11 JUL 2024 to 08 AUG 2024

SC-3, 11 JUL 2024 to 08 AUG 2024



One Minute Holding Pattern		CSI VORTAC		HODIS CSI 4		ZEMOT CSI 7.2	
4000 ← 235°		055° →		055°		055°	
*2500 when using Gillespie County altimeter setting.		*2440					
		4 NM		3.2 NM			
CATEGORY	A	B	C	D			
CIRCLING	2440-1¼ 823 (900-1¼)	2440-1¼ 823 (900-1¼)	2440-2½ 823 (900-2½)	NA			
HODIS FIX MINIMUMS							
CIRCLING	2320-1 703 (800-1)	2340-1 723 (800-1)	2380-2¼ 763 (800-2¼)	NA			
				REIL Rwy 12 and 30			
				MIRL Rwy 3-21 and 12-30			
				FAF to MAP 7.2 NM			
Knots		60	90	120	150	180	
Min:Sec		7:12	4:48	3:36	2:53	2:24	

VOR-A