

WAAS CH <b>48836</b> <b>W24A</b>	APP CRS <b>240°</b>	Rwy Idg TDZE Apt Elev	<b>6406</b> <b>597</b> <b>616</b>
--	------------------------	-----------------------------	---

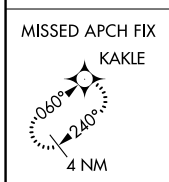
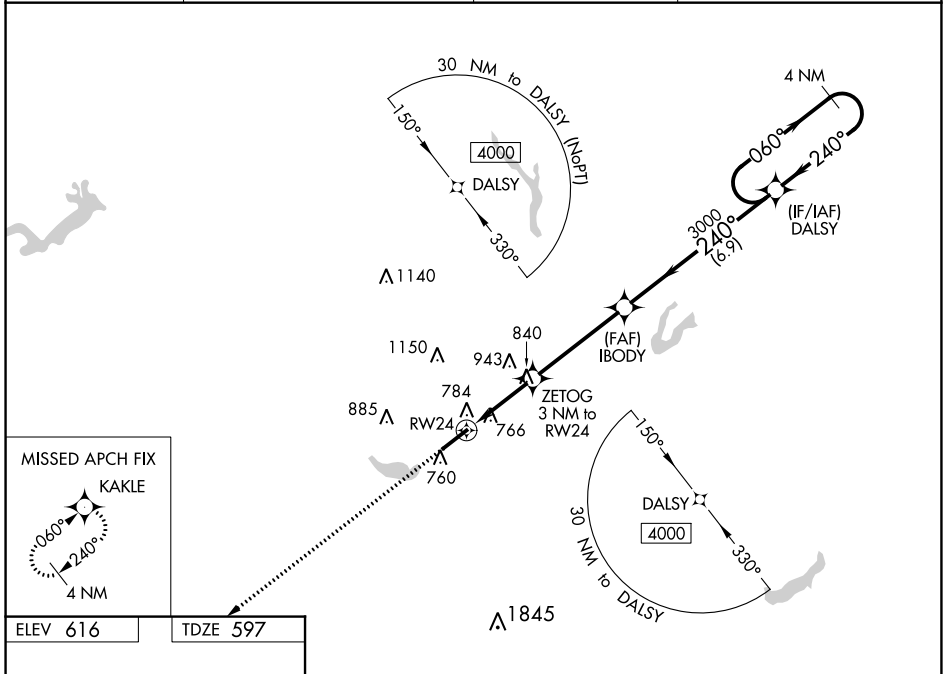
# RNAV (GPS) RWY 24

BURLINGTON/ALAMANCE RGNL (BUY)

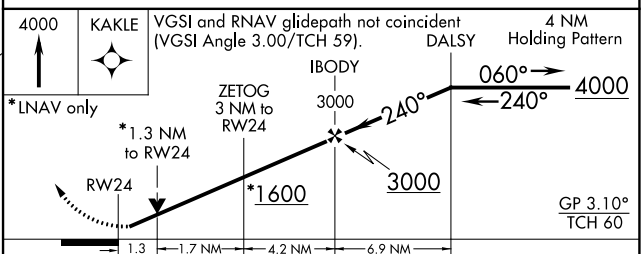
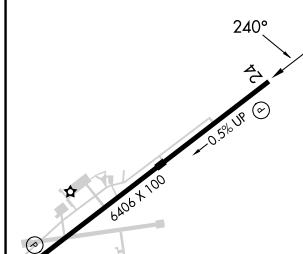
**⚠** For uncompensated Baro-VNAV systems, LNAV/VNAV NA below -12°C (11°F) or above 54°C (130°F). DME/DME RNP-0.3 NA. When local altimeter setting not received, use Greensboro altimeter setting and increase all DA 97 feet and all MDA 100 feet. Increase LPV, LNAV/VNAV, LNAV Cats C/D and Circling Cat C visibility ¼ mile. Baro-VNAV and VDP NA when using Greensboro altimeter setting. Helicopter visibility reduction below ¾ SM NA.

**MISSED APPROACH:**  
Climb to 4000 direct KAKLE and hold.

ASOS <b>135.325</b>	GREENSBORO APP CON <b>126.6 327.075</b>	CLNC DEL <b>120.25</b>	UNICOM <b>122.975 (CTAF) 0</b>
------------------------	--	---------------------------	-----------------------------------



ELEV 616	TDZE 597
----------	----------



CATEGORY	A	B	C	D
LPV DA		987-1¼	390 (400-1¼)	
LNAV/VNAV DA		1056-1½	459 (500-1½)	
LNAV MDA	1060-1	463 (500-1)	1060-1¾	463 (500-1¾)
<b>C</b> CIRCLING	1100-1	484 (500-1)	1520-2¾ 904 (1000-2¾)	1520-3 904 (1000-3)

HIRL Rwy 6-24 **0**  
REL Rws 6 and 24 **0**

SE-2, 11 JUL 2024 to 08 AUG 2024

SE-2, 11 JUL 2024 to 08 AUG 2024