

APP CRS	Rwy Idg	4000
215°	TDZE	594
	Apf Elev	594

RNAV (GPS) RWY 21

LOGAN COUNTY (AAA)

RNP APCH.

▼ If local altimeter setting not received, use Springfield, IL altimeter setting and increase all MDAs 60 feet. VDP NA with Springfield, IL altimeter setting. Rwy 21 helicopter visibility reduction below 3/4 SM NA.

▲

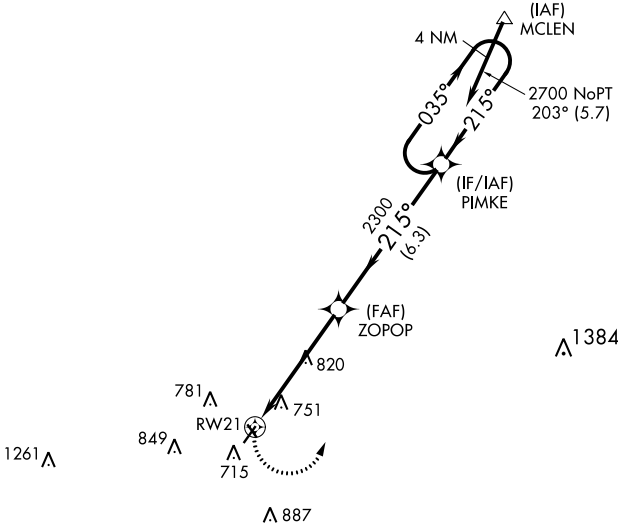
MISSED APPROACH: Climbing left turn to 2700 direct PIMKE and hold.

AWOS-3
118.775

SAINT LOUIS APP CON *
126.15 323.0

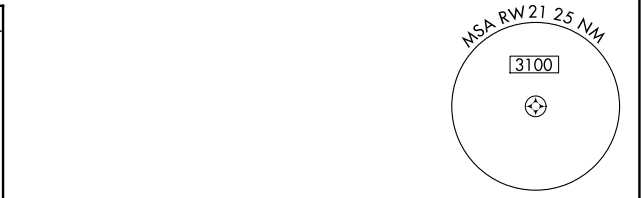
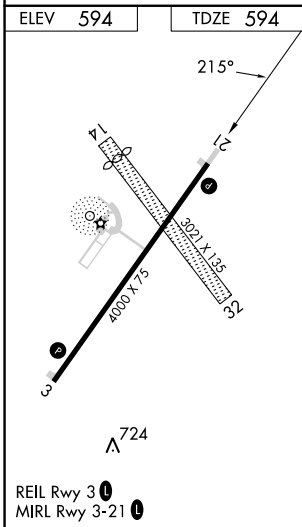
UNICOM
122.8 (CTAF) 0

Procedure NA for arrivals at MCLEN on V9-69 northeast bound.



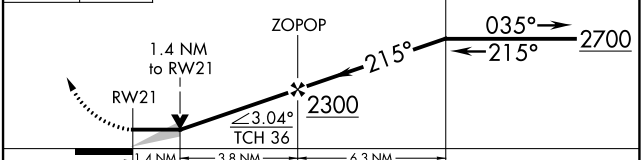
EC-3, 11 JUL 2024 to 08 AUG 2024

EC-3, 11 JUL 2024 to 08 AUG 2024



2700 PIMKE VGSI and descent angles not coincident (VGSI Angle 3.00/TCH 25).

4 NM Holding Pattern



CATEGORY	A	B	C	D
LNAV MDA	1080-1	486 (500-1)	1080-1 1/4 486 (500-1 1/4)	1080-1 1/2 486 (500-1 1/2)