

VORTAC SPI 112.7 Chan 74	APP CRS 041°	Rwy Idg 4000 TDZE 593 Apt Elev 594
--	------------------------	---

VOR RWY 3

LOGAN COUNTY (AAA)

DME or RADAR required.

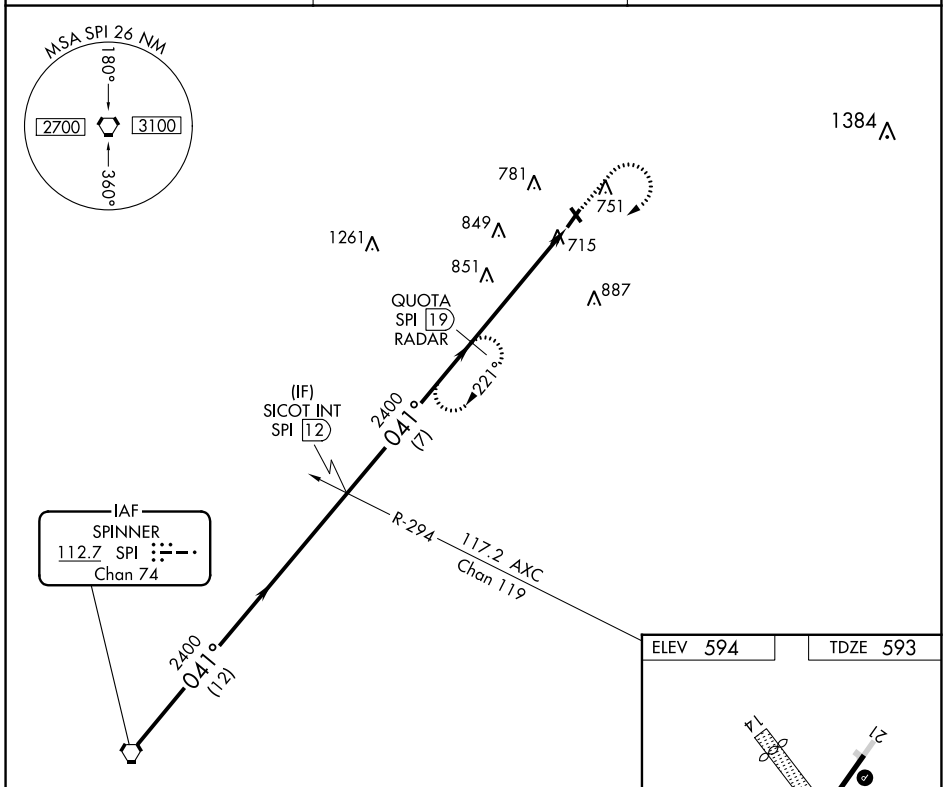
- ⚠ When local altimeter setting not received, use Springfield, IL altimeter setting and increase all MDAs 60 feet, increase Circling Cat C/D visibility ¼ SM. Circling NA to Rwy 14 and 32. Rwy 3 helicopter visibility reduction below ¾ SM NA.

MISSED APPROACH: Climb to 2000 then climbing right turn to 2400 via SPI R-041 to QUOTA/19 DME/RADAR and hold.

AWOS-3
118.775

SAINT LOUIS APP CON ★
126.15 323.0

UNICOM
122.8 (CTAF)



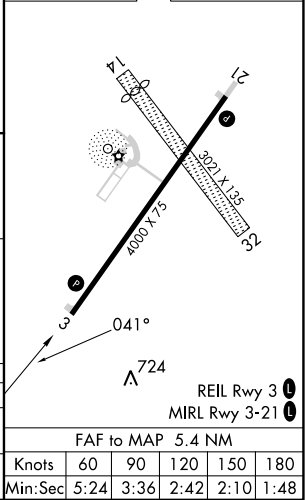
EC-3, 11 JUL 2024 to 08 AUG 2024

EC-3, 11 JUL 2024 to 08 AUG 2024

ELEV 594	TDZE 593
----------	----------

Procedure Turn NA VGSI and descent angles not coincident (VGSI Angle 3.50/TCH 26).

SPI VORTAC	SICOT INT SPI 12	QUOTA SPI 19 RADAR	2000	2400	QUOTA SPI 19
2400	041°	2400	↑	↘ SPI R-041	
12 NM		7 NM	5.4 NM		
CATEGORY	A	B	C	D	
S-3	1120-1 527 (600-1)	1120-1¼ 527 (600-1¼)	1120-1½ 527 (600-1½)	1120-1¾ 527 (600-1¾)	
CIRCLING	1140-1 546 (600-1)	1140-1¼ 546 (600-1¼)	1280-2 686 (700-2)	1280-2¼ 686 (700-2¼)	



Knots	60	90	120	150	180
	Min:Sec	5:24	3:36	2:42	2:10