

(AHMET4.KKIDS) 24025

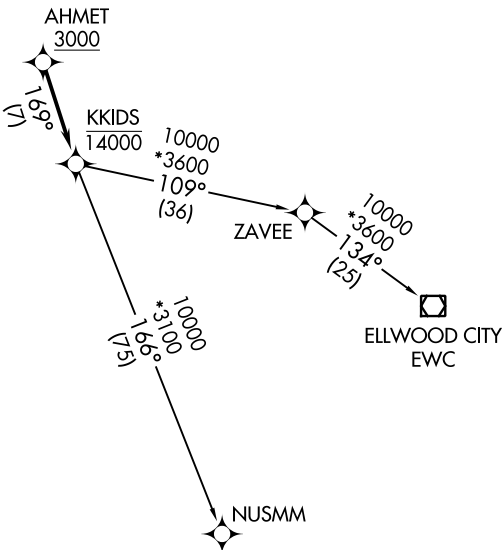
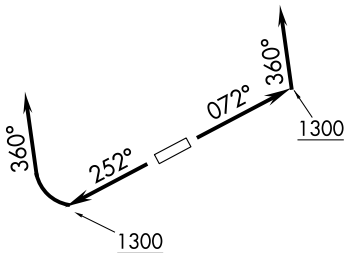
AL-5703 (FAA)

LORAIN COUNTY RGNL (LPR)  
LORAIN/ELYRIA, OHIO

# AHMET FOUR DEPARTURE (RNAV)

ASOS  
118.925  
CLNC DEL  
125.7  
CTAF  
122.7  
CLEVELAND DEP CON  
125.35 346.325

**TOP ALTITUDE:  
ASSIGNED BY ATC**



NOTE: RNAV 1.  
NOTE: RADAR required.  
NOTE: DME/DME/IRU or GPS required.

TAKEOFF MINIMUMS:  
Rwys 7, 25: Standard  
with minimum climb of  
500' per NM to 1300.

NOTE: Chart not to scale.

## DEPARTURE ROUTE DESCRIPTION

TAKEOFF RUNWAY 7: Climb on heading 072° to 1300, then on heading 360° or as assigned by ATC for RADAR vectors to cross AHMET at or above 3000, thence....

TAKEOFF RUNWAY 25: Climb on heading 252° to 1300, then right turn on heading 360° or as assigned by ATC for RADAR vectors to cross AHMET at or above 3000, thence....

....on track 169° to cross KKIDS at or below 14000, then on (transition).

Maintain altitude assigned by ATC, expect filed altitude ten minutes after departure.

ELLWOOD CITY TRANSITION (AHMET4.EWC)

NUSMM TRANSITION (AHMET4.NUSMM)

AHMET FOUR DEPARTURE (RNAV)

(AHMET4.KKIDS) 26MAR20

LORAIN/ELYRIA, OHIO  
LORAIN COUNTY RGNL (LPR)

EC-2, 11 JUL 2024 to 08 AUG 2024

EC-2, 11 JUL 2024 to 08 AUG 2024