

WAAS CH 48835 W31A	APP CRS 306°	Rwy Idg TDZE Apt Elev	6143 4940 4970
--	------------------------	-----------------------------	---

RNAV (GPS) RWY 31

JOHNSON COUNTY (BYG)

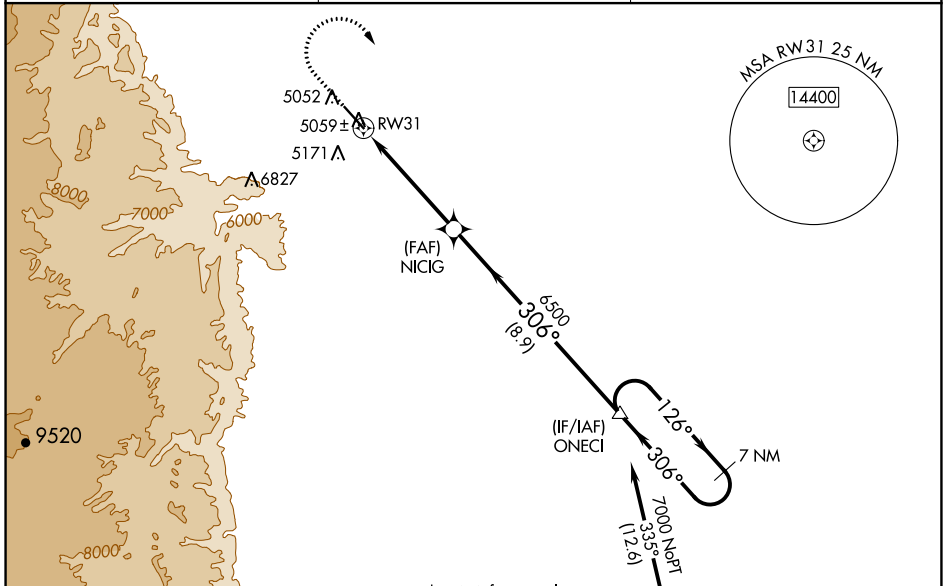
⚠ When Rwy 13 VGSI inop, Circling Rwy 13 NA at night. Baro-VNAV and VDP NA when using Sheridan altimeter setting. For uncompensated Baro-VNAV systems, LNAV/VNAV NA below -27°C (-16°F) or above 48°C (120°F). Circling NA southwest of Rwy 13-31. DME/DME RNP-0.3 NA. When local altimeter setting not received, use Sheridan altimeter setting and increase all DA/MDA 200 feet; increase all LPV, LNAV/VNAV, and all LNAV and Circling Cat C/D visibilities ¾ mile.

MISSED APPROACH: Climb to 6000, then climbing right turn to 7000 direct ONECI and hold.

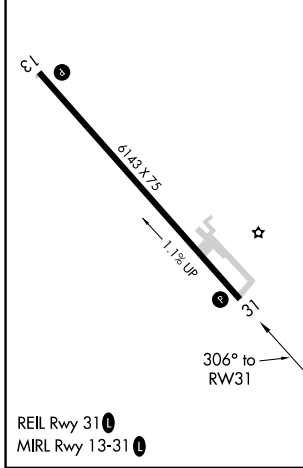
ASOS
135.425

SALT LAKE CENTER
127.75 351.9

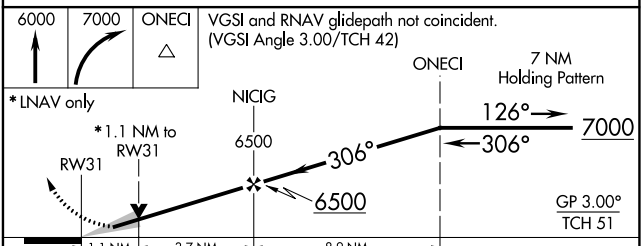
UNICOM
122.8 (CTAF) 0



ELEV 4970	TDZE 4940
-----------	-----------



Procedure NA for arrivals at CZI VOR/DME on airway radials 256 CW 048.



CATEGORY	A	B	C	D
LPV DA		5190-¾	250 (300-¾)	
LNAV/VNAV DA		5275-1½	335 (400-1½)	
LNAV MDA	5320-1	380 (400-1)	5320-1½	380 (400-1½)
C CIRCLING	5440-1	470 (500-1)	5460-1½ 490 (500-1½)	5600-2 630 (700-2)

NW-1, 11 JUL 2024 to 08 AUG 2024

NW-1, 11 JUL 2024 to 08 AUG 2024