

WASS CH <b>77641</b> <b>W21A</b>	APP CRS <b>213°</b>	Rwy Idg <b>4597</b> TDZE <b>18</b> Apt Elev <b>19</b>
--	------------------------	---

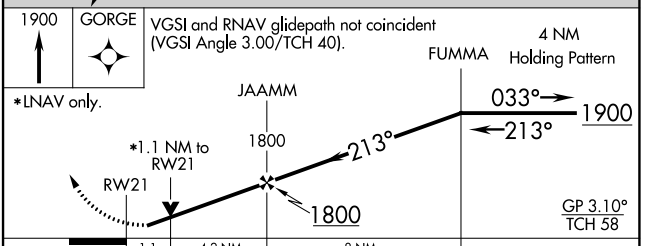
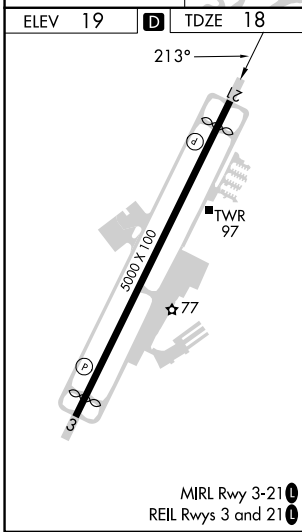
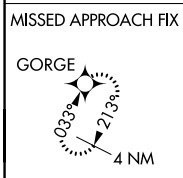
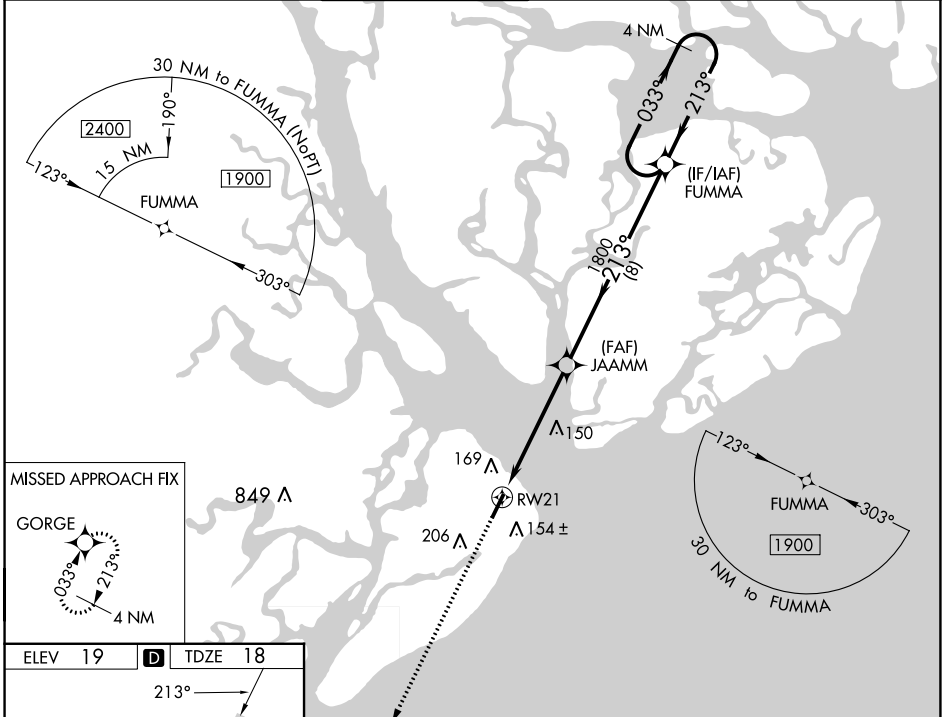
# RNAV (GPS) RWY 21

HILTON HEAD (HXD)

For uncompensated Baro-VNAV systems, LNAV/VNAV NA below -15°C (5°F) or above 54°C (130°F).  
 DME/DME RNP-0.3 NA. Rwy 21 helicopter visibility reduction below ¾ SM NA.

MISSED APPROACH: Climb to 1900 direct GORGE and hold.

ATIS <b>121.4</b>	SAVANNAH APP CON ★ <b>125.3 371.875</b>	HILTON HEAD TOWER ★ <b>118.975 (CTAF) 0</b>	GND CON <b>121.1</b>	CLNC DEL <b>121.1</b>	CLNC DEL <b>123.85</b> (When twr closed)
----------------------	--	--	-------------------------	--------------------------	--



CATEGORY	A	B	C	D
LPV DA		340-1	322 (400-1)	
LNAV/VNAV DA		293-7/8	275 (300-7/8)	
LNAV MDA	480-1	462 (500-1)	480-1 3/8	462 (500-1 3/8)
<input checked="" type="checkbox"/> CIRCLING	480-1 461 (500-1)	520-1 501 (600-1)	520-1 1/2 501 (600-1 1/2)	580-2 561 (600-2)

SE-2, 11 JUL 2024 to 08 AUG 2024

SE-2, 11 JUL 2024 to 08 AUG 2024