

# ECHOO ONE DEPARTURE (RNAV)

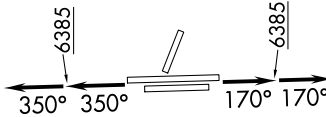
AL-5715 (FAA)

CENTENNIAL (APA)  
DENVER, COLORADO

SW-1, 11 JUL 2024 to 08 AUG 2024

**TOP ALTITUDE:**  
FL230

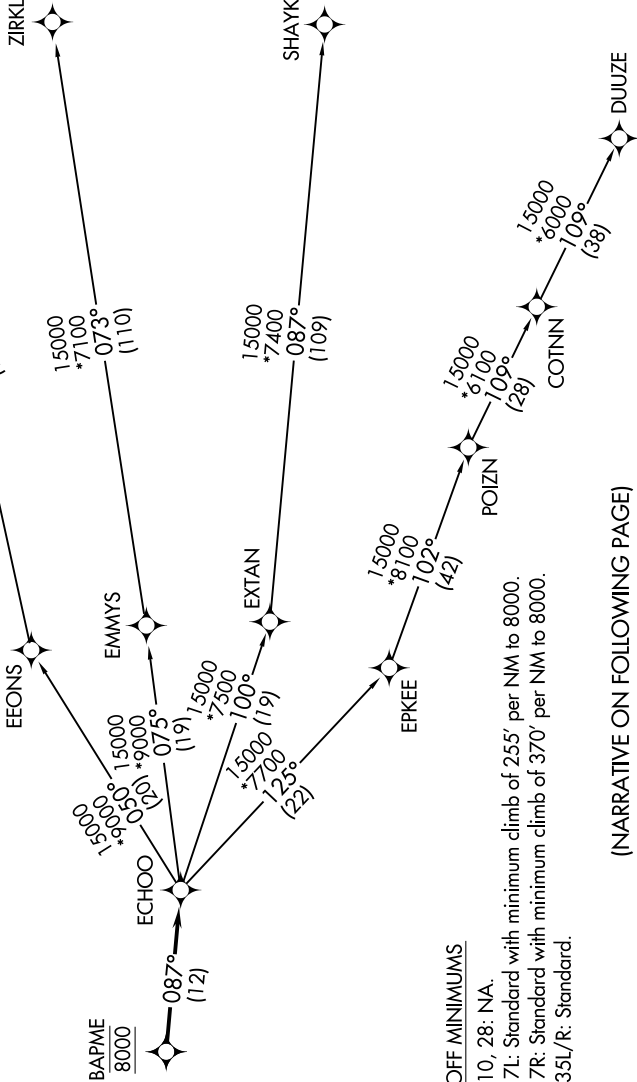
- NOTE: DME/DME/IRU or GPS required.
- NOTE: RNAV 1.
- NOTE: Turbojets only.
- NOTE: RADAR required.
- NOTE: Accelerate to 250K or greater upon reaching 10000.
- NOTE: If slower speed is required to meet crossing restrictions advise CLNC DEL prior to taxi.



**TAKEOFF MINIMUMS**

- Rwys 10, 28: NA.
- Rwy 17L: Standard with minimum climb of 255' per NM to 8000.
- Rwy 17R: Standard with minimum climb of 370' per NM to 8000.
- Rwys 35L/R: Standard.

ATIS  
120.3  
CLNC DEL  
128.6  
DENVER DEP COIN  
132.75 269.3  
WYNM



NOTE: Chart not to scale.

(NARRATIVE ON FOLLOWING PAGE)

SW-1, 11 JUL 2024 to 08 AUG 2024

# ECHOO ONE DEPARTURE (RNAV)

DENVER, COLORADO  
CENTENNIAL (APA)