

ROCKIES SIX DEPARTURE

AL-5715 (FAA)

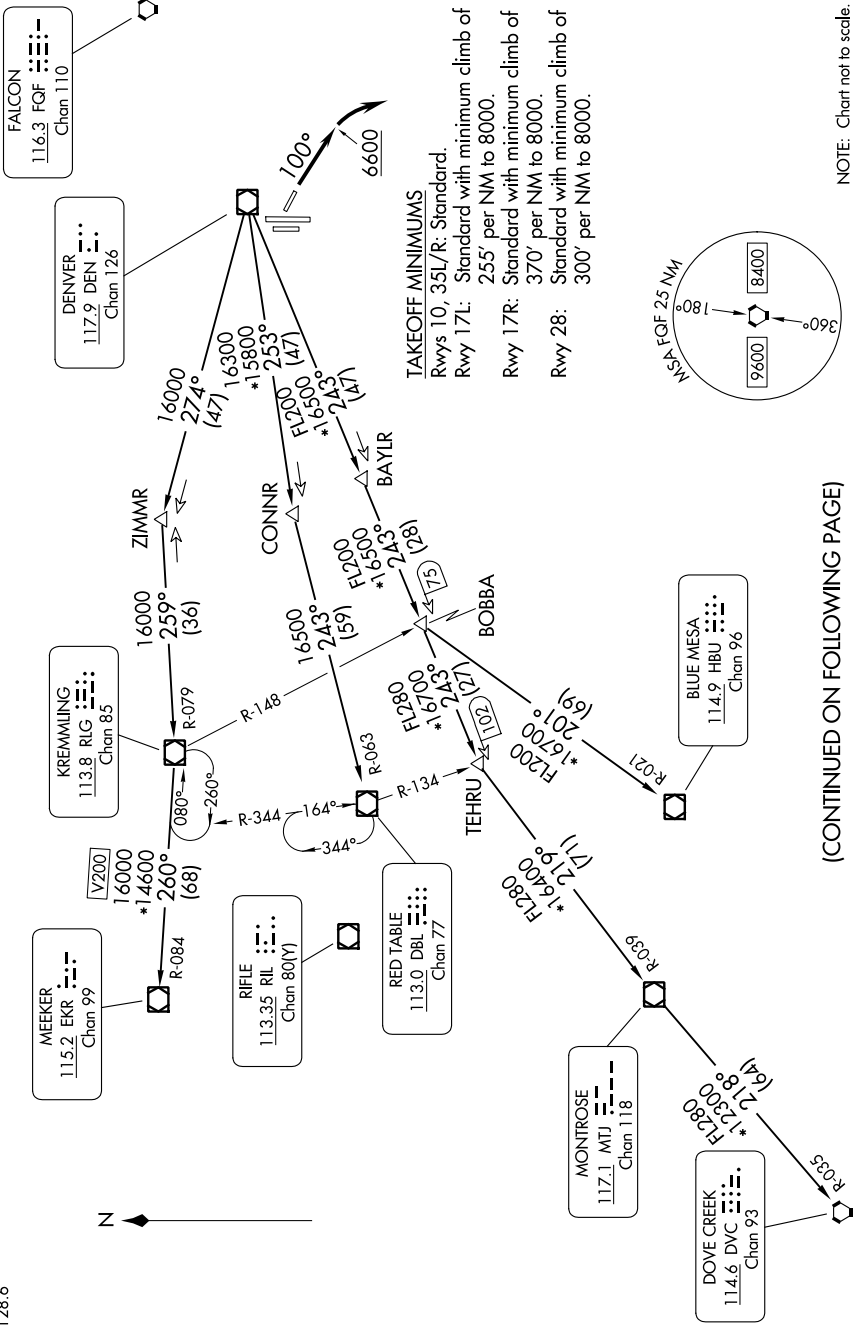
CENTENNIAL (APA)
DENVER, COLORADO

TOP ALTITUDE: ASSIGNED BY ATC

RADAR required.

DENVER DEP CON
132.75 269.3
CLNC DEL
128.6

SW-1, 11 JUL 2024 to 08 AUG 2024



TAKEOFF MINIMUMS
 Rwy 10, 35L/R: Standard.
 Rwy 17L: Standard with minimum climb of 255' per NM to 8000.
 Rwy 17R: Standard with minimum climb of 370' per NM to 8000.
 Rwy 28: Standard with minimum climb of 300' per NM to 8000.

NOTE: Chart not to scale.

(CONTINUED ON FOLLOWING PAGE)

SW-1, 11 JUL 2024 to 08 AUG 2024

ROCKIES SIX DEPARTURE

DENVER, COLORADO
CENTENNIAL (APA)