

APP CRS 058°	Rwy Idg TDZE Apt Elev	5005 9 9
------------------------	-----------------------------	-------------------------------------

RNAV (GPS) RWY 6

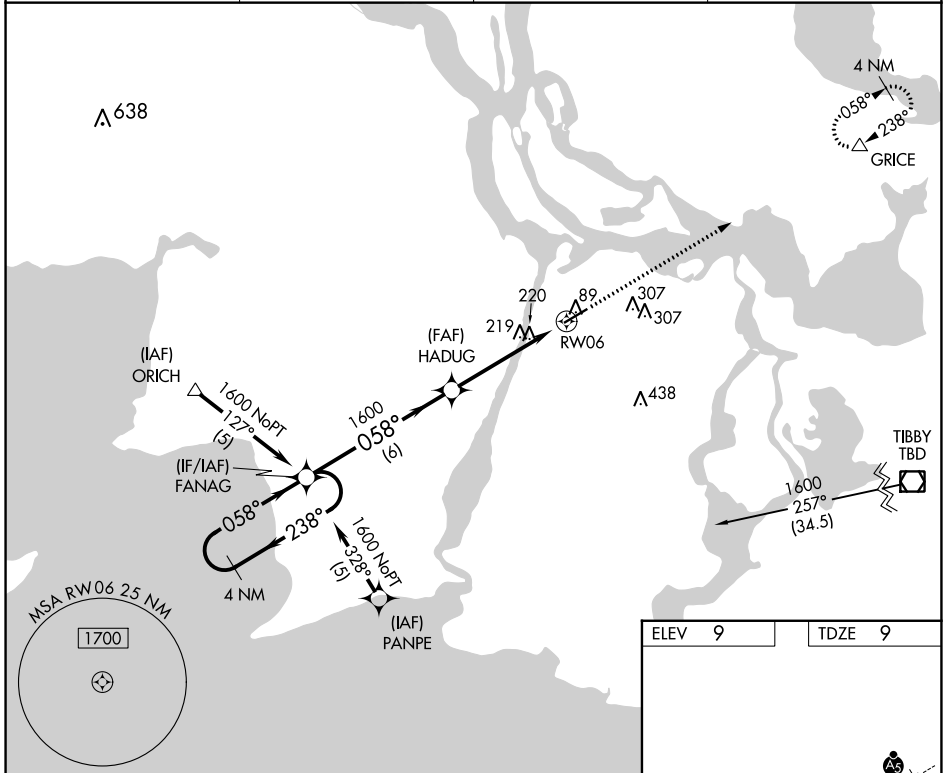
HARRY P WILLIAMS MEML (PTN)

RNP APCH.

▽ Circling NA to Rwy 4W and 22W. Rwy 6 helicopter visibility reduction below 1 SM NA.
▲ When local altimeter setting not received, use New Iberia altimeter setting and increase all MDA 100 feet; increase LNAV Cat C visibility ¼ SM and Circling Cat C visibility ½ SM. When VGSI inop, Straight-in/Circling Rwy 6 procedure NA at night.

MISSED APPROACH: Climb to 1700 direct GRICE and hold.

AWOS-3PT 134.575	NEW ORLEANS APP CON 124.3 350.35	CLNC DEL 124.3	UNICOM 122.8 (CTAF) 0
----------------------------	--	--------------------------	---------------------------------

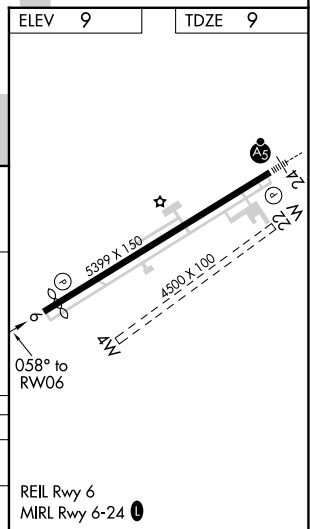


4 NM Holding Pattern

VGSI and descent angles not coincident (VGSI Angle 3.00/TCH 50).

1600	← 238°	058° →	1600	→ 058°	→ RWY 6
		6 NM		4.8 NM	
				3.03° TCH 45	

CATEGORY	A	B	C	D
LNAV MDA	540-1	531 (600-1)	540-1½ 531 (600-1½)	NA
CIRCLING	540-1 531 (600-1)	660-1 651 (700-1)	660-1¾ 651 (700-1¾)	NA



SC-4, 11 JUL 2024 to 08 AUG 2024

SC-4, 11 JUL 2024 to 08 AUG 2024