

WAAS CH <b>70604</b> <b>W07A</b>	APP CRS <b>069°</b>	Rwy Idg TDZE Apt Elev	<b>5100</b> <b>1318</b> <b>1318</b>
--	------------------------	-----------------------------	---

# RNAV (GPS) RWY 7

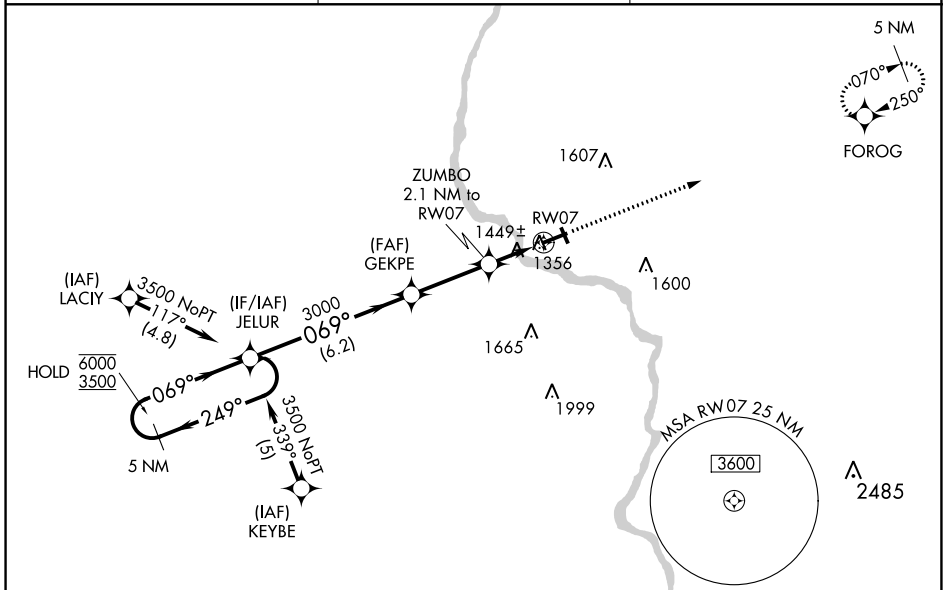
MERRILL MUNI (R.R.L.)

RNP APCH - GPS.

**▼** Circling Rwy 16, 34 NA at night. Rwy 7 helicopter visibility reduction below 3/4 SM NA.  
**▲** For uncompensated Baro-VNAV systems, LNAV/VNAV NA below -17°C or above 54°C.

MISSED APPROACH:  
Climb to 3500 direct FOROG and hold.

AWOS-3 <b>119.925</b>	MINNEAPOLIS CENTER <b>124.4 317.7</b>	UNICOM <b>122.8 (CTAF) 0</b>
--------------------------	--	---------------------------------



EC-3, 11 JUL 2024 to 08 AUG 2024

EC-3, 11 JUL 2024 to 08 AUG 2024

5 NM Holding Pattern		VGSI and RNAV glidepath not coincident (VGSI Angle 3.00/TCH 40).		3500	FOROG
GP 3.00° TCH 40		JELUR		GEKPE	ZUMBO
6000 ← 249°		3000		2.1 NM to RWY 7	1.1 NM to RWY 7
3500 → 069°		2020			RWY 7
		6.2 NM		3 NM	1 NM
CATEGORY	A	B	C	D	
LPV DA	1635-1	317 (400-1)		NA	
LNAV/VNAV DA	1754-1¼	436 (500-1¼)		NA	
LNAV MDA	1700-1	382 (400-1)	1700-1⅛ 382 (400-1⅛)	NA	
<b>C</b> CIRCLING	1760-1 442 (500-1)	1780-1 462 (500-1)	1920-1¾ 602 (700-1¾)	NA	

