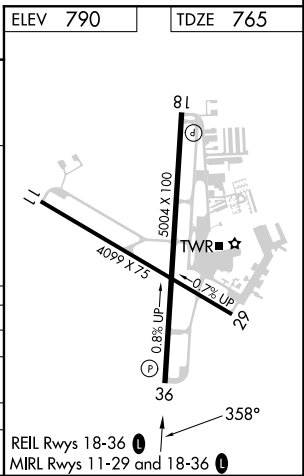
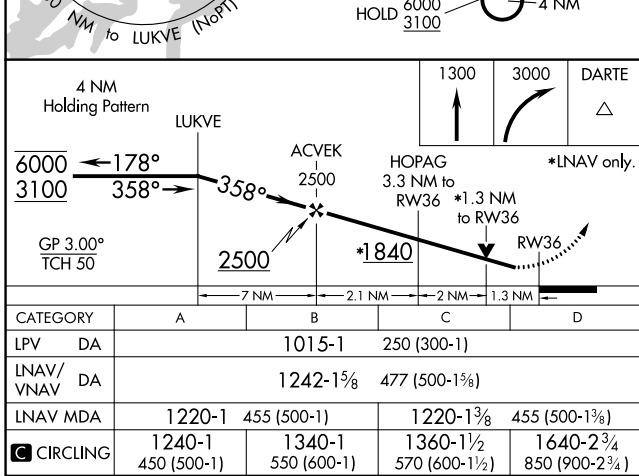
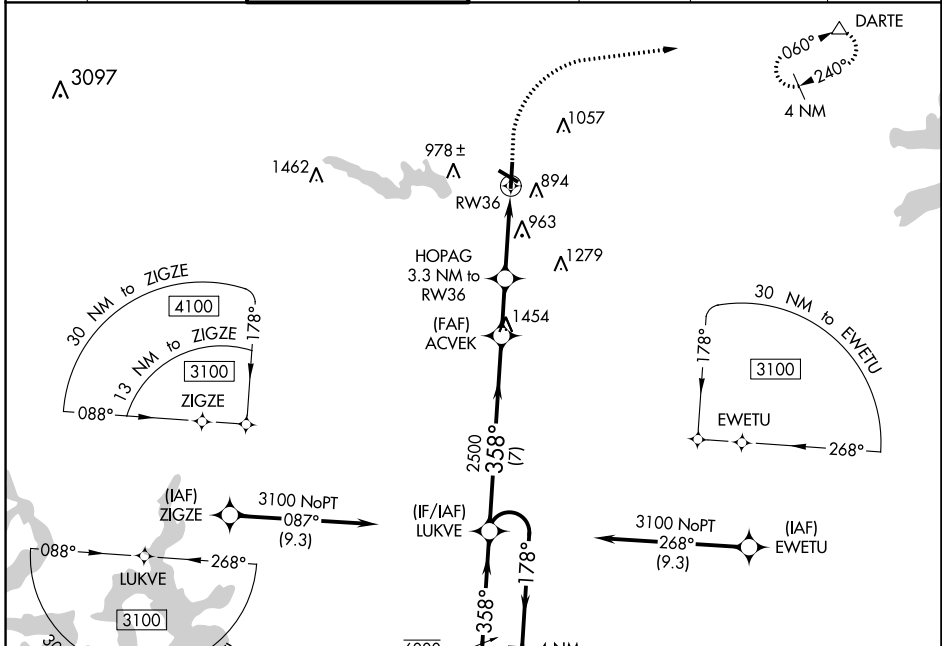


WAAS CH <b>72738</b> <b>W36A</b>	APP CRS <b>358°</b>	Rwy Idg TDZE Apt Elev	<b>5004</b> <b>765</b> <b>790</b>
--	------------------------	-----------------------------	---

# RNAV (GPS) RWY 36

GEORGETOWN EXEC (GTU)

RNP APCH.		<p>▼ Circling Rwy 29 NA at night. Rwy 36 helicopter visibility reduction below 3/4 SM NA.</p> <p>▲ For uncompensated Baro-VNAV systems, LNAV/VNAV NA below -16°C or above 54°C.</p>		<p>MISSED APPROACH: Climb to 1300 then climbing right turn to 3000 direct DARTE and hold.</p>		
ATIS <b>118.6</b>	AUSTIN APP CON <b>119.0 370.85</b>	GEORGETOWN TOWER * <b>120.225</b> (CTAF) <b>0</b>	GND CON <b>119.125</b>	CLNC DEL <b>119.125</b>	CLNC DEL <b>121.1</b> (when twr closed)	UNICOM <b>123.0</b>



SC-3, 11 JUL 2024 to 08 AUG 2024

SC-3, 11 JUL 2024 to 08 AUG 2024