

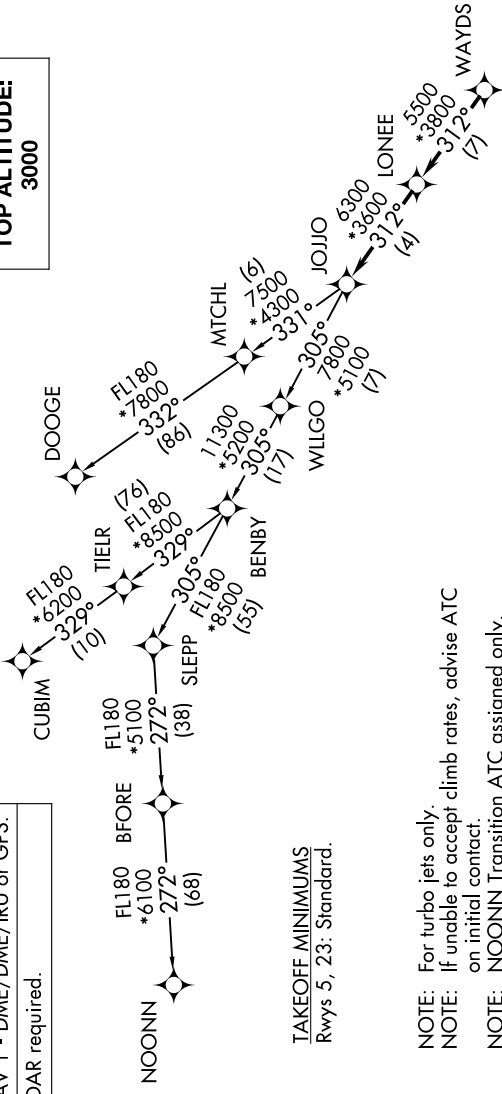
JOJO FIVE DEPARTURE (RNAV)

SE-2, 11 JUL 2024 to 08 AUG 2024

RNAV 1 - DME/DME/IRU or GPS.
RADAR required.

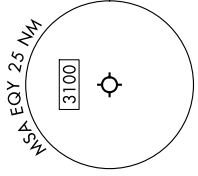
TOP ALTITUDE:
3000

CHARLOTTE DEP CON
120.05 307.8
ASOS
135.775
CUNC DEL
132.55
UNICOM (CTAF)
122.7



TAKEOFF MINIMUMS
Rwys 5, 23: Standard.

- NOTE: For turbo jets only.
- NOTE: If unable to accept climb rates, advise ATC on initial contact.
- NOTE: NOONN Transition ATC assigned only.
- NOTE: Upon reaching 10000 MSL, accelerate to and maintain 280K, if unable advise ATC.



NOTE: Chart not to scale.

DEPARTURE ROUTE DESCRIPTION

Climb on heading assigned by ATC, on RADAR vectors to WAYDS, then on depicted route to JOJO. Then on assigned transition. Maintain 3000, expect filed altitude within 10 minutes after departure.

- CUBIM TRANSITION (JOJO5.CUBIM)
- DOOGE TRANSITION (JOJO5.DOOGE)
- NOONN TRANSITION (JOJO5.NOONN)

SE-2, 11 JUL 2024 to 08 AUG 2024