

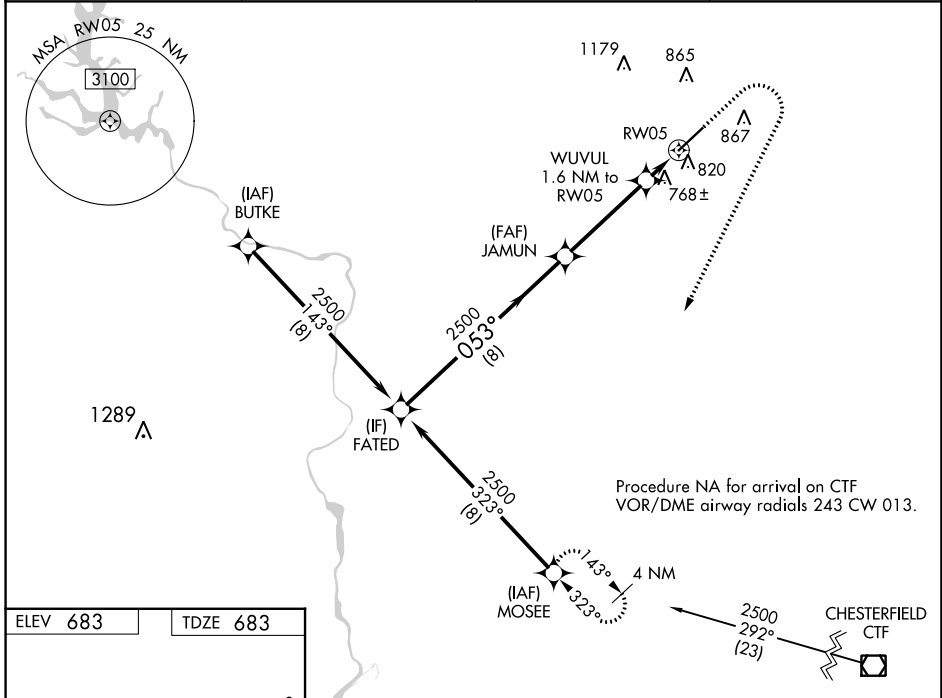
WAAS CH 66002 W05A	APP CRS 053°	Rwy Idg TDZE Apt Elev	7001 683 683
--	------------------------	-----------------------------	---

RNAV (GPS) RWY 5

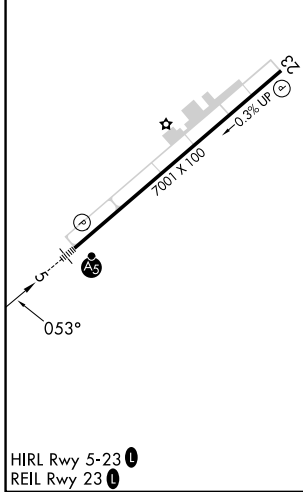
CHARLOTTE/MONROE EXEC (EQY)

RNP APCH-GPS.		MALSR	MISSED APPROACH: Climb to 1140 then climbing right turn to 2500 direct MOSEE and hold.
<p>⚠ Rwy 5 helicopter visibility reduction below 3/4 SM NA. For uncompensated Baro-VNAV systems, LNAV/VNAV NA below -7°C or above 54°C. Inop table does not apply to LPV all Cats. For inop ALS, increase LNAV/VNAV all Cats visibility to 3/8 SM and LNAV all Cats visibility to 1 SM.</p>			

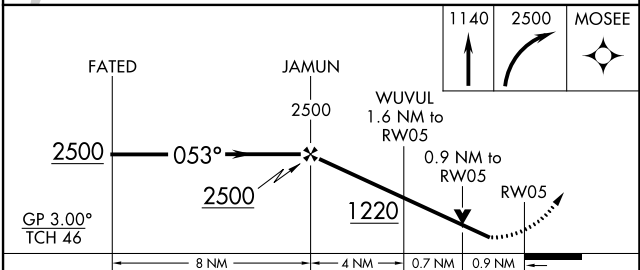
ASOS 135.775	CHARLOTTE APP CON 120.05 307.8	CLNC DEL 132.55	UNICOM 122.7 (CTAF) 0
------------------------	--	---------------------------	---------------------------------



ELEV 683	TDZE 683
----------	----------



HIRL Rwy 5-23 0
REIL Rwy 23 0



GP 3.00° TCH 46	8 NM	4 NM	0.7 NM	0.9 NM	
CATEGORY	A	B	C	D	
LPV DA	933-3/4 250 (300-3/4)				
LNAV/VNAV DA	1001-3/4 318 (400-3/4)				
LNAV MDA	1020-3/4 337 (400-3/4)				
☑ CIRCLING	1220-1	537 (600-1)	1220-1 1/2	1480-2 1/2	797 (800-2 1/2)

SE-2, 11 JUL 2024 to 08 AUG 2024

SE-2, 11 JUL 2024 to 08 AUG 2024