

NDB UMB 380	APP CRS 276°	Rwy Idg TDZE Apt Elev	5424 379 385
-----------------------	------------------------	-----------------------------	---

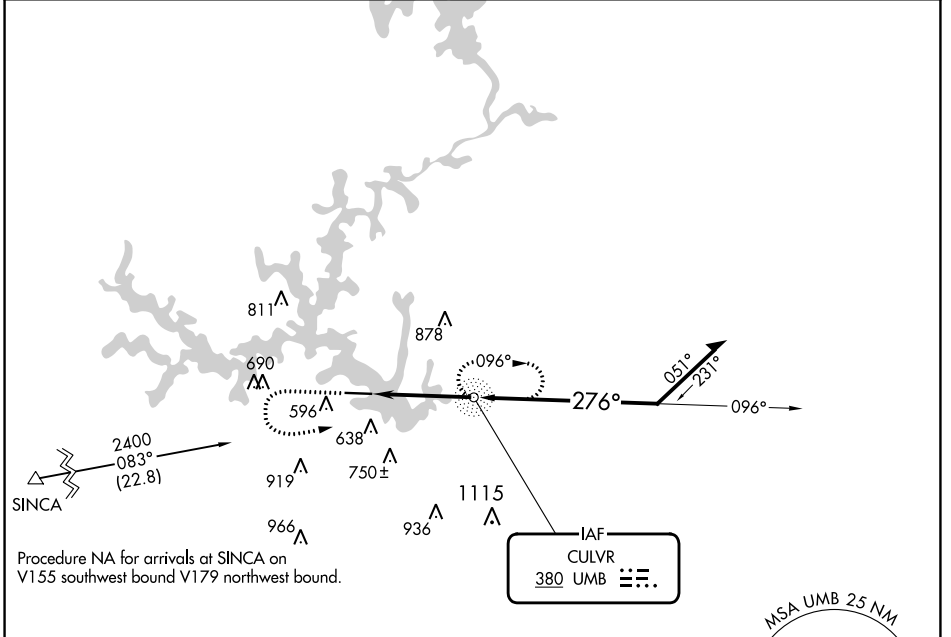
NDB RWY 28

BALDWIN COUNTY RGNL (MLJ)

⚠ Rwy 28 helicopter visibility reduction below 3/4 SM NA.

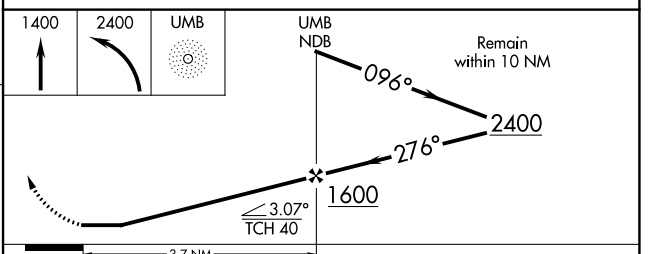
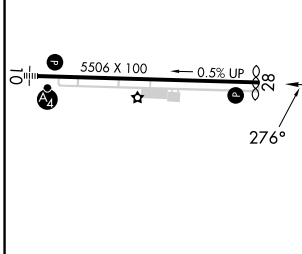
⚠ MISSED APPROACH: Climb to 1400 then climbing left turn to 2400 direct UMB NDB and hold, continue climb-in-hold to 2400.

AWOS-3 120.925	ATLANTA APP CON ★ 124.2 279.6	UNICOM 122.975 (CTAF) 0
--------------------------	---	-----------------------------------



Procedure NA for arrivals at SINCA on V155 southwest bound V179 northwest bound.

ELEV 385	TDZE 379
----------	----------



MIRL Rwy 10-28 0
REIL Rwys 10 and 28 0

FAF to MAP 3.7 NM

Knots	60	90	120	150	180
Min:Sec	3:42	2:28	1:51	1:29	1:14

CATEGORY	A	B	C	D
S-28	940-1	561 (600-1)	940-1½	561 (600-1½)
C CIRCLING	940-1	555 (600-1)	1080-2 695 (700-2)	1280-3 895 (900-3)

SE-4, 11 JUL 2024 to 08 AUG 2024

SE-4, 11 JUL 2024 to 08 AUG 2024