

(MEARZ7.MEARZ) 23334

# MEARZ SEVEN DEPARTURE

AL-5733 (FAA)

EAGLE CREEK AIRPARK (EYE)  
INDIANAPOLIS, INDIANA

**TOP ALTITUDE:  
ASSIGNED BY ATC**

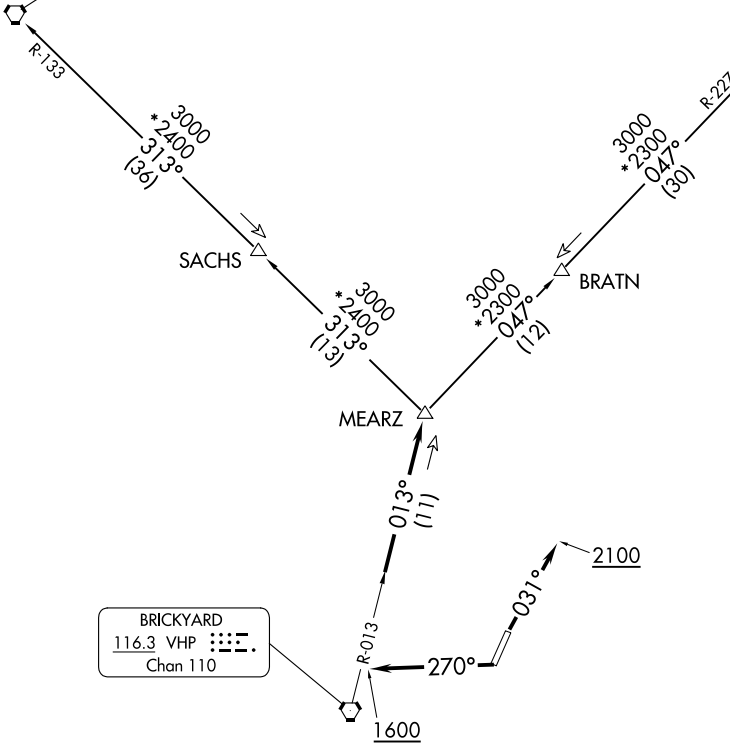
RADAR required.

ASOS  
121.575  
CLNC DEL  
128.6  
INDIANAPOLIS DEP CON  
119.05 317.8

BOILER  
115.1 BVT  
Chan 98

MARION  
108.6 MZZ  
Chan 23

BRICKYARD  
116.3 VHP  
Chan 110

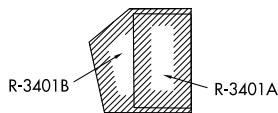


TAKEOFF MINIMUMS

Rwy 3, 21: Standard.

- NOTE: Turbojets accelerate to 250K until reaching 10000, if unable advise ATC.
- NOTE: Assigned to aircraft with a requested altitude of 11000 or above.
- NOTE: Select appropriate localizer/DME frequency/channel prior to departure.

(NARRATIVE ON FOLLOWING PAGE)



NOTE: Chart not to scale.

EC-2, 11 JUL 2024 to 08 AUG 2024

EC-2, 11 JUL 2024 to 08 AUG 2024