

CAIRO, ILLINOIS

AL-5738 (FAA)

23278

WAAS CH 77932 W14A	APP CRS 141°	Rwy Idg TDZE Apt Elev	4001 322 322
--	------------------------	-----------------------------	---

RNAV (GPS) RWY 14

CAIRO RGNL (CIR)

RNP APCH.

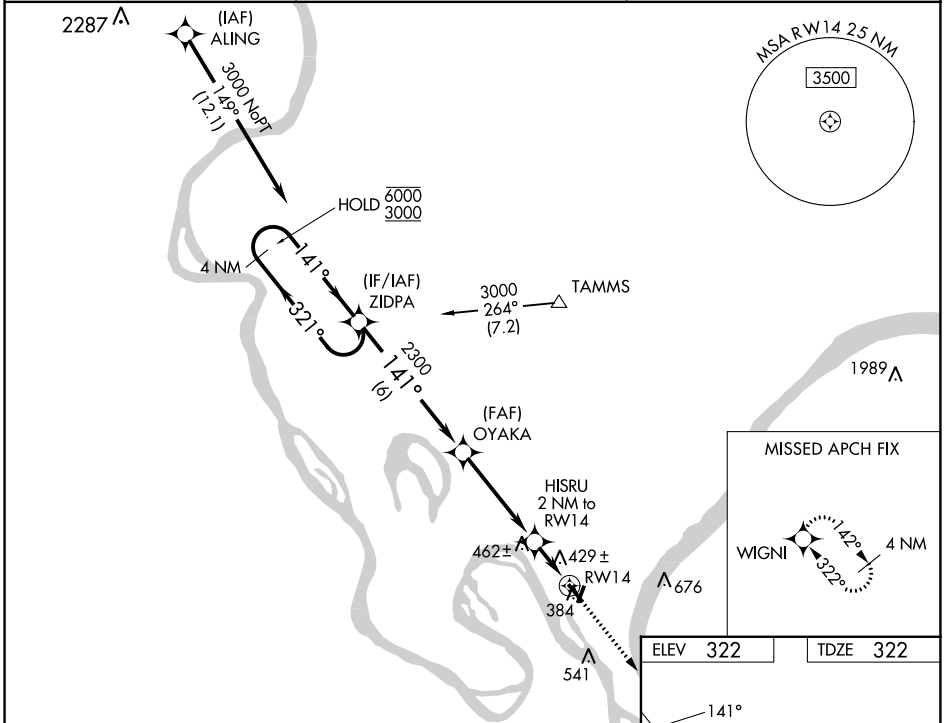
- Procedure NA at night.
- Rwy 14 helicopter visibility reduction below 1 SM NA.

MISSED APPROACH:
Climb to 3000 direct
WIGNI and hold.

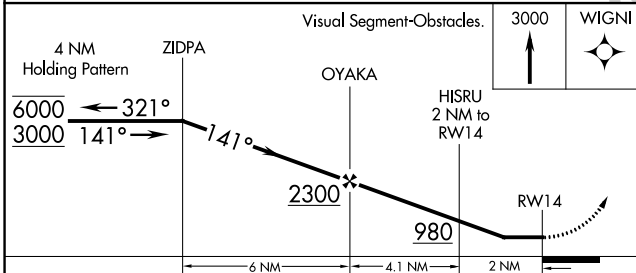
AWOS-3
118.025

MEMPHIS CENTER
133.65 292.15

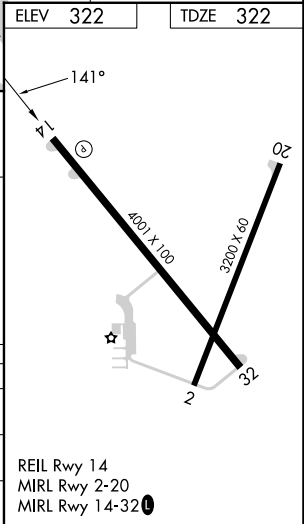
UNICOM
122.8 (CTAF) 0



ELEV 322	TDZE 322
----------	----------



CATEGORY	A	B	C	D
LP MDA	680-1 358 (400-1)			NA
LNAV MDA	720-1	398 (400-1)	720-1 1/8 398 (400-1 1/8)	NA
CIRCLING	780-1	900-1	1020-2	NA
	458 (500-1)	578 (600-1)	698 (700-2)	



REIL Rwy 14
MIRL Rwy 2-20
MIRL Rwy 14-32 0

EC-3, 11 JUL 2024 to 08 AUG 2024

EC-3, 11 JUL 2024 to 08 AUG 2024

CAIRO, ILLINOIS
Orig-C 16JUL20

37°04'N-89°13'W

CAIRO RGNL (CIR) RNAV (GPS) RWY 14