

APP CRS 334°	Rwy Idg 4000
	TDZE 928
	Apt Elev 928

RNAV (GPS) RWY 33

KNOXVILLE MUNI (O3V)

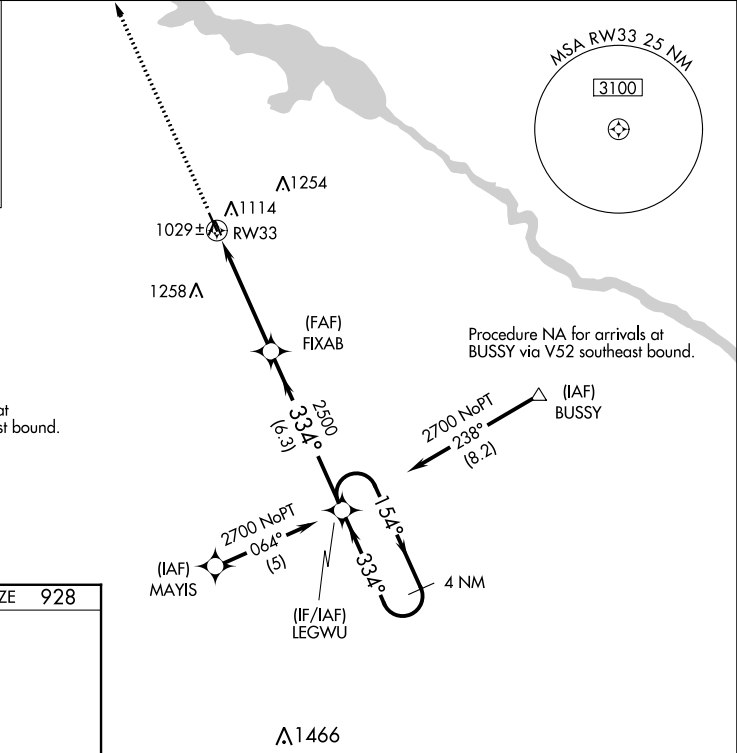
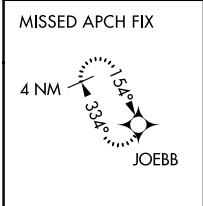
▼ DME/DME RNP-0.3 NA. Visibility reduction by helicopters NA.
▲ Baro-VNAV and VDP NA when using Pella altimeter setting.
 When local altimeter setting not received, use Pella altimeter setting and increase all DA 29 feet, all MDA 40 feet, LNAV/VNAV all Cats visibility 1/4 mile.
 For uncompensated Baro-VNAV systems, LNAV/VNAV NA below -16°C (4°F) or above 54°C (130°F).

MISSED APPROACH: Climb to 3000 direct JOEBB and hold.

AWOS-3
119.775

DES MOINES APP CON
123.9 307.15

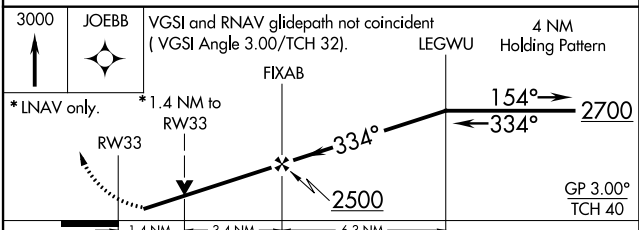
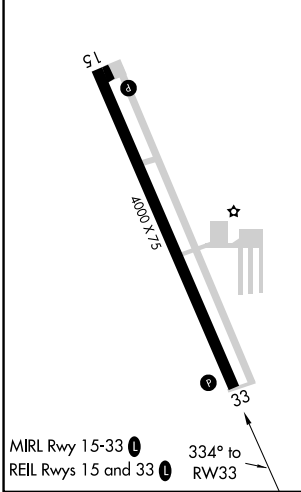
UNICOM
122.8 (CTAF)



Procedure NA for arrivals at LACON via V175 northwest bound.

Procedure NA for arrivals at BUSSY via V52 southeast bound.

ELEV 928	TDZE 928
----------	----------



CATEGORY	A	B	C	D
LNAV/VNAV DA	1299-1¼	371 (400-1¼)		NA
LNAV MDA	1400-1	472 (500-1)		NA
CIRCLING	1480-1	552 (600-1)		NA

NC-3, 11 JUL 2024 to 08 AUG 2024

NC-3, 11 JUL 2024 to 08 AUG 2024