

WAAS CH <b>82222</b> <b>W33A</b>	APP CRS <b>333°</b>	Rwy Idg TDZE Apt Elev	<b>4400</b> <b>830</b> <b>833</b>
--	------------------------	-----------------------------	---

# RNAV (GPS) RWY 33

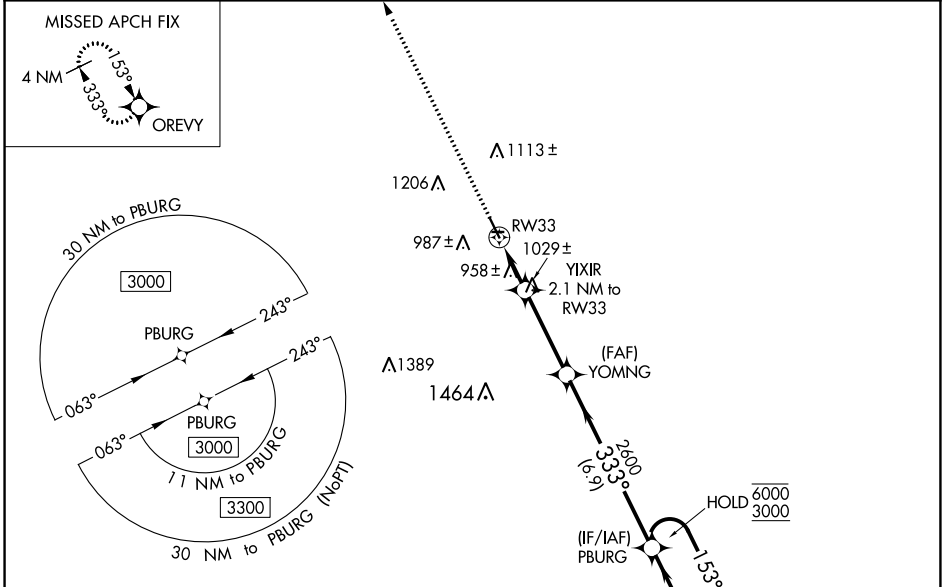
MONTICELLO RGNL (MXO)

RNP APCH - GPS.

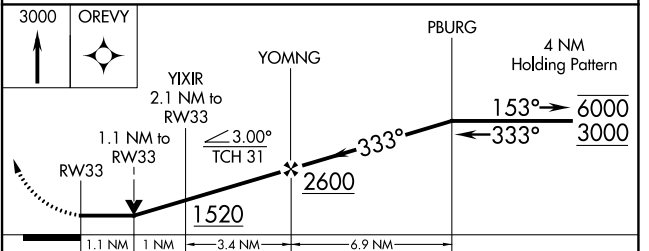
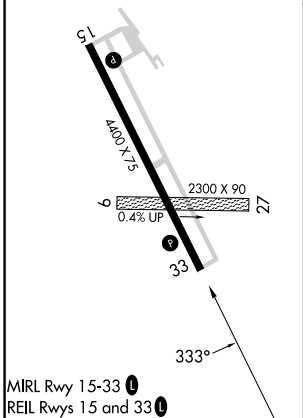
**⚠** Circling NA to Rwy 9 and 27. Circling Rwy 15 NA at night. VDP NA when using Dubuque altimeter setting. Rwy 33 helicopter visibility reduction below  $\frac{3}{4}$  SM NA. When local altimeter setting not received, use Dubuque altimeter setting and increase all MDAs 100 feet; increase LP Cat C, LNAV Cat C and Circling Cat C visibility  $\frac{1}{4}$  SM.

**⚠** MISSED APPROACH: Climb to 3000 direct OREVEY and hold.

AWOS-3 <b>119.275</b>	CEDAR RAPIDS APP CON * <b>134.05 266.8</b>	UNICOM <b>122.8 (CTAF) 0</b>
--------------------------	---	---------------------------------



ELEV 833	TDZE 830
----------	----------



CATEGORY	A	B	C	D
LP MDA	1220-1	390 (400-1)	1220- $\frac{1}{8}$ 390 (400- $\frac{1}{8}$ )	NA
LNAV MDA	1280-1	450 (500-1)	1280- $\frac{1}{8}$ 450 (500- $\frac{1}{8}$ )	NA
CIRCLING	1380-1 547 (600-1)	1400-1 567 (600-1)	1520-2 687 (700-2)	NA

NC-3, 11 JUL 2024 to 08 AUG 2024

NC-3, 11 JUL 2024 to 08 AUG 2024