

VOR/DME CUZ 108.2 Chan 19	APP CRS 135°	Rwy Idg 4203 TDZE 2546 Apt Elev 2546
---	------------------------	---

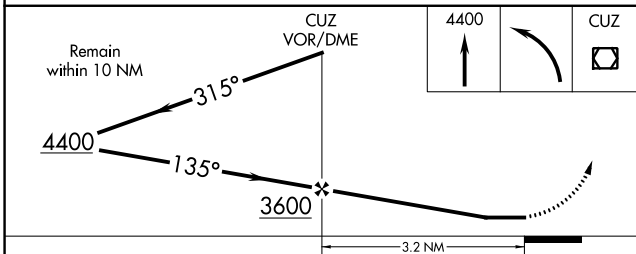
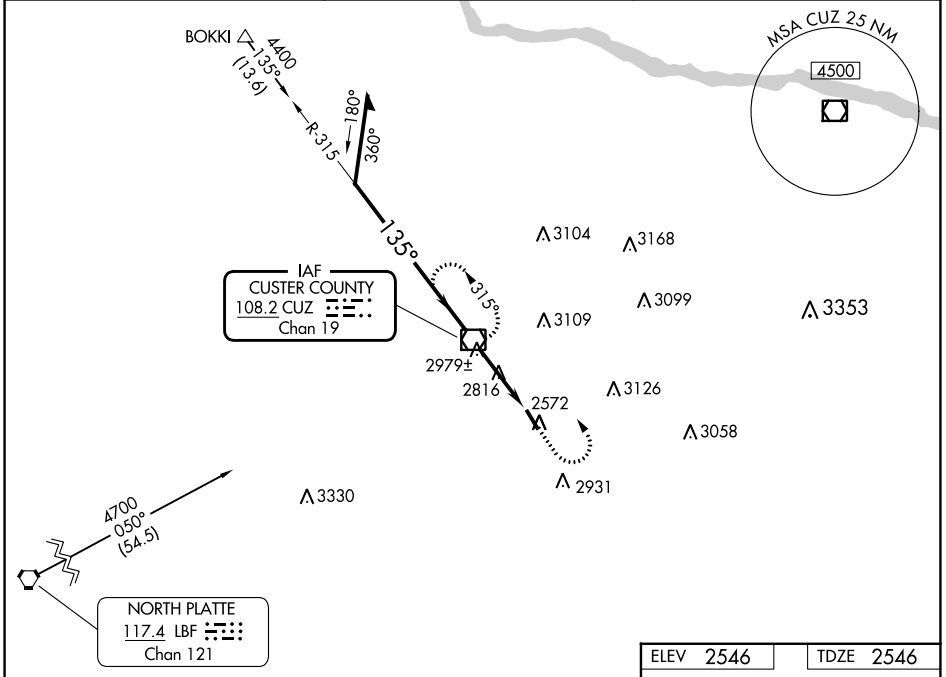
VOR RWY 14

BROKEN BOW MUNI/KEITH GLAZE FLD (BBW)

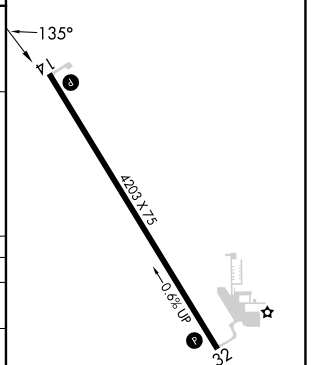
⚠ When local altimeter setting not received; use North Platte Rgnl/Lee Bird Fld altimeter setting. Rwy 14 helicopter visibility reduction below $\frac{3}{4}$ SM NA.

⚠ MISSED APPROACH: Climb to 4400 then left turn direct CUZ VOR/DME and hold.

ASOS 120.0	DENVER CENTER 132.7 226.675	UNICOM 122.8 (CTAF) 0
----------------------	---------------------------------------	---------------------------------



ELEV 2546	TDZE 2546
-----------	-----------



CATEGORY	A	B	C	D
S-14	3240-1	694 (700-1)		NA
CIRCLING	3280-1	734 (800-1)		NA
NORTH PLATTE RGNL/LEE BIRD FLD ALTIMETER SETTING MINIMUMS				
S-14	3380-1 834 (900-1)	3380-1½ 834 (900-1½)		NA
CIRCLING	3440-1½	894 (900-1½)		NA

REIL Rwy 14 0				
MIRL Rwy 14-32 0				
FAF to MAP 3.2 NM				
Knots	60	90	120	150
Min:Sec	3:12	2:08	1:36	1:17

NC-2, 11 JUL 2024 to 08 AUG 2024

NC-2, 11 JUL 2024 to 08 AUG 2024