

VOR/DME CUZ <b>108.2</b> Chan <b>19</b>	APP CRS <b>316°</b>	Rwy Idg TDZE Apt Elev	<b>4203</b> <b>2534</b> <b>2546</b>
---	------------------------	-----------------------------	---

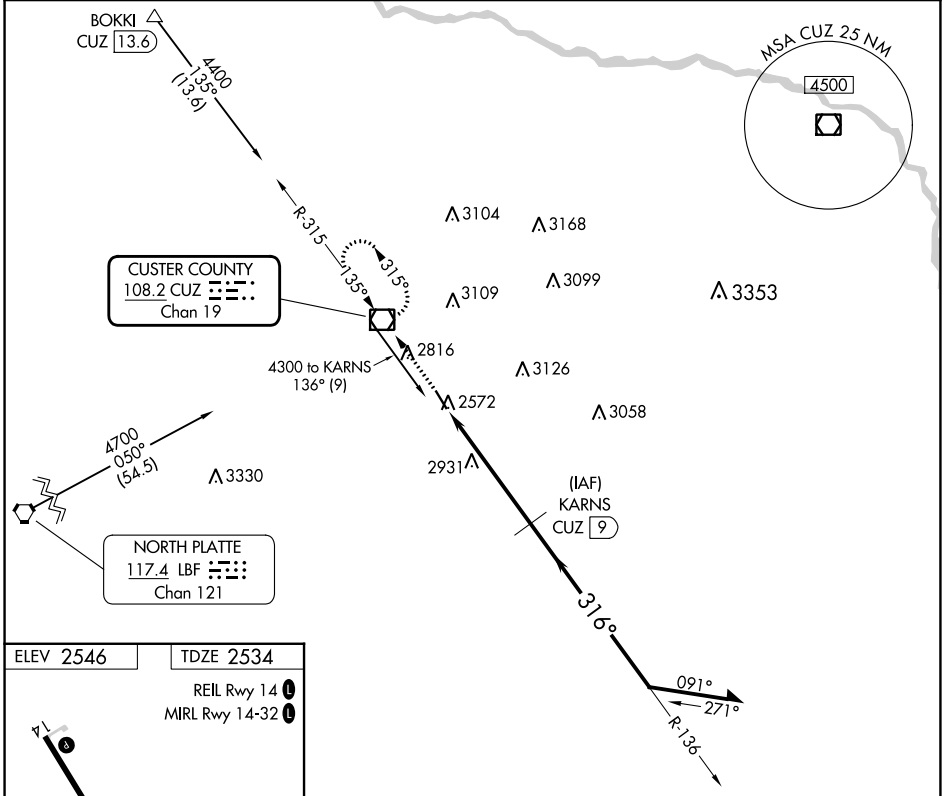
# VOR/DME RWY 32

BROKEN BOW MUNI/KEITH GLAZE FLD (BBW)

**⚠** When local altimeter setting not received; use North Platte Rgnl/Lee Bird Fld altimeter setting and increase all MDAs 160 feet, increase Cat B visibility to 1¼ miles, and Circling Cat B visibility to 1¼ miles. VDP NA when using North Platte Rgnl/Lee Bird Fld altimeter setting. Rwy 32 helicopter visibility reduction below ¾ SM NA.

**MISSED APPROACH:** Climb to 4400 direct CUZ VOR/DME and hold.

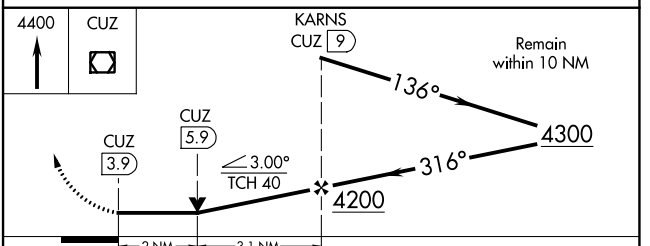
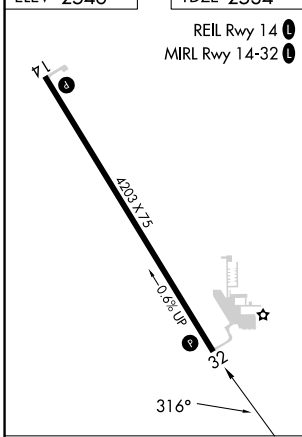
ASOS <b>120.0</b>	DENVER CENTER <b>132.7 226.675</b>	UNICOM <b>122.8 (CTAF) 0</b>
----------------------	---------------------------------------	---------------------------------



NC-2, 11 JUL 2024 to 08 AUG 2024

NC-2, 11 JUL 2024 to 08 AUG 2024

ELEV 2546	TDZE 2534
-----------	-----------



FAF to MAP 5.1 NM					
Knots	60	90	120	150	180
Min:Sec	5:06	3:24	2:33	2:02	1:42

CATEGORY	A	B	C	D
S-32	3200-1	666 (700-1)	NA	
CIRCLING	3200-1	654 (700-1)	NA	