

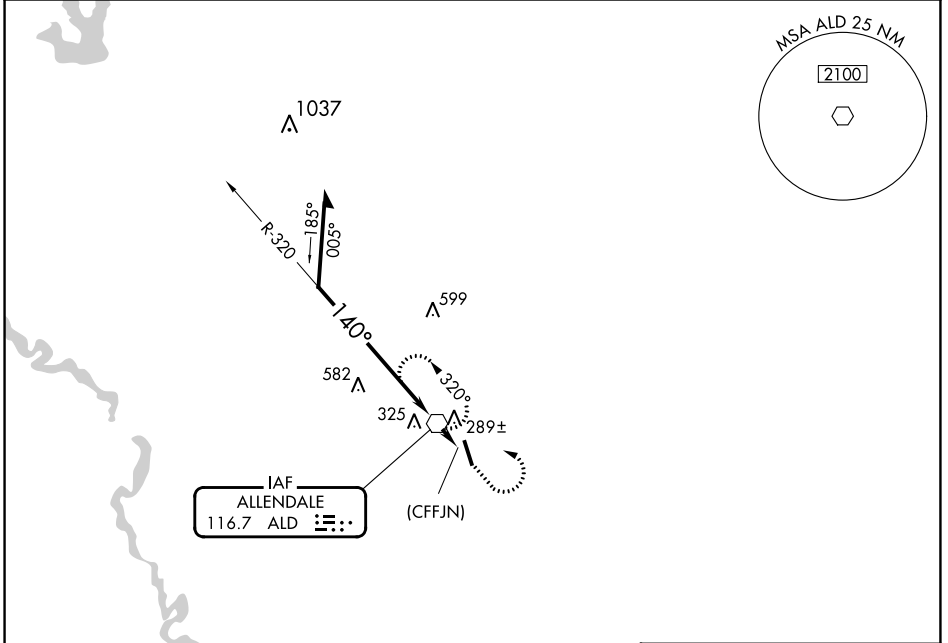
VOR ALD <b>116.7</b>	APP CRS <b>140°</b>	Rwy Idg TDZE Apt Elev	<b>N/A</b> <b>N/A</b> <b>162</b>
-------------------------	------------------------	-----------------------------	--

**VOR-A**  
ALLENDALE COUNTY (A.Q.X)

**⚠** When local altimeter setting not received, use Augusta Rgnl at Bush Fld altimeter setting.

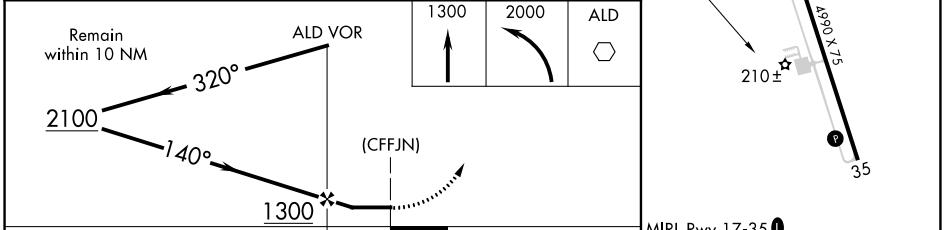
**⚠** MISSED APPROACH: Climb to 1300, then climbing left turn to 2000 direct ALD VOR and hold.

AWOS-3PT <b>118.95</b>	JACKSONVILLE CENTER <b>132.925 363.2</b>	UNICOM <b>122.8 (CTAF) 0</b>
---------------------------	---	---------------------------------



SE-2, 11 JUL 2024 to 08 AUG 2024

SE-2, 11 JUL 2024 to 08 AUG 2024



CATEGORY	A	B	C	D	FAF to MAP 1.1 NM					
<b>C</b> CIRCLING	860-1	698 (700-1)	NA		Knots	60	90	120	150	180
					Min:Sec	1:06	0:44	0:33	0:26	0:22