


LOC/DME I-SCC 109.3 Chan 30	APP CRS 238°	Rwy Idg 6500 TDZE 66 Apt Elev 67
--	------------------------	---

LOC BC RWY 24

DEADHORSE (SCC) (PASC)

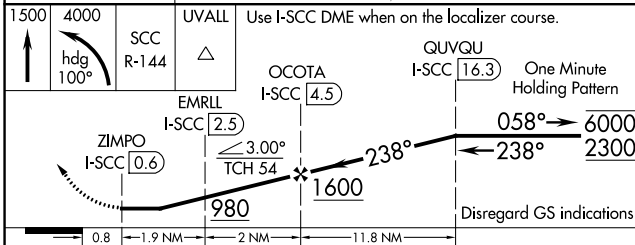
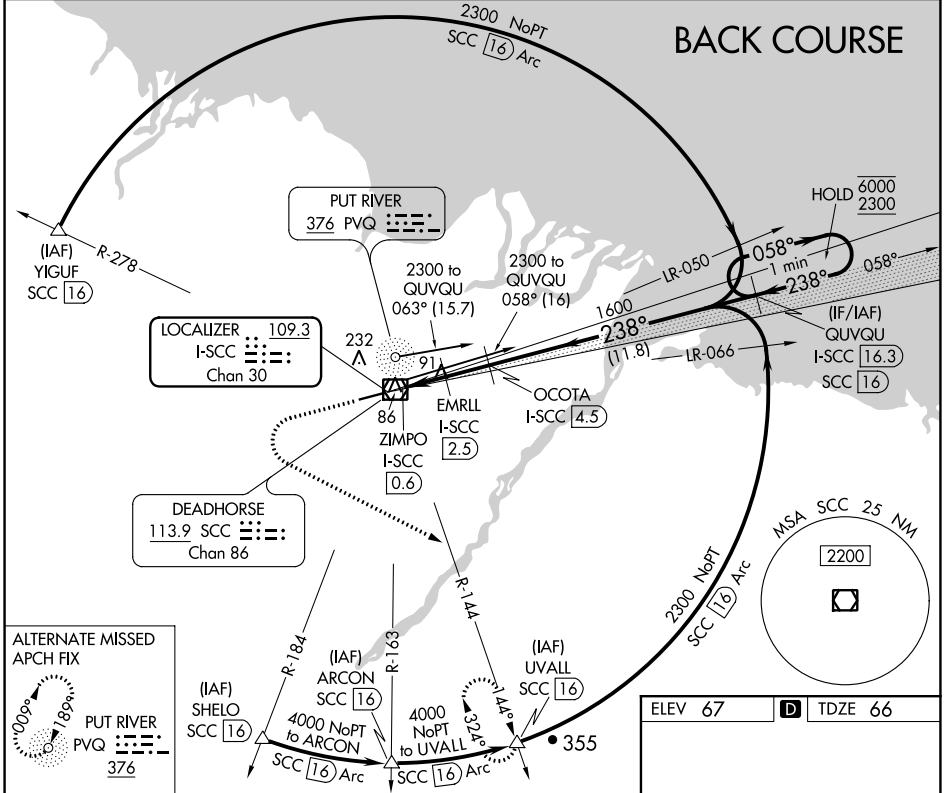
DME required.

▲ For inop ALS, increase S-24 Cat E visibility to RVR 5000.

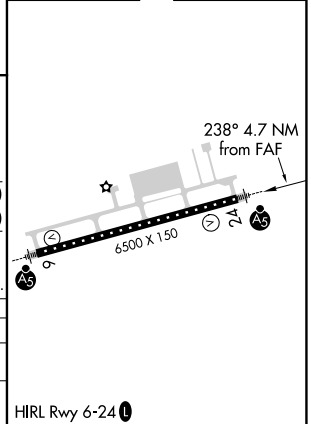
MALSR 

MISSED APPROACH: Climb to 1500 then climbing left turn to 4000 on heading 100° and SCC VOR/DME R-144 to UVALL/SCC VOR/DME 16 DME and hold.

AFIS 118.4	ANCHORAGE CENTER 134.4 370.9	DEADHORSE RADIO 123.6 (CTAF) 0
----------------------	--	--



ELEV 67	D TDZE 66
---------	------------------



CATEGORY	A	B	C	D	E
S-24	340/24 274 (300-½)				
C CIRCLING	540-1	473 (500-1)	580-1½ 513 (600-1½)	620-2	553 (600-2)