

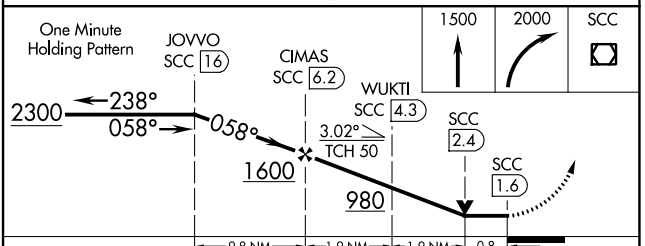
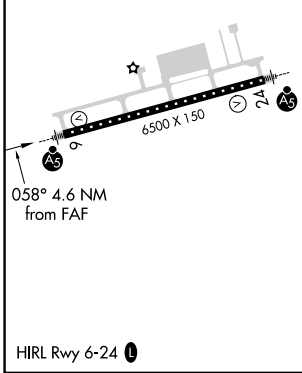
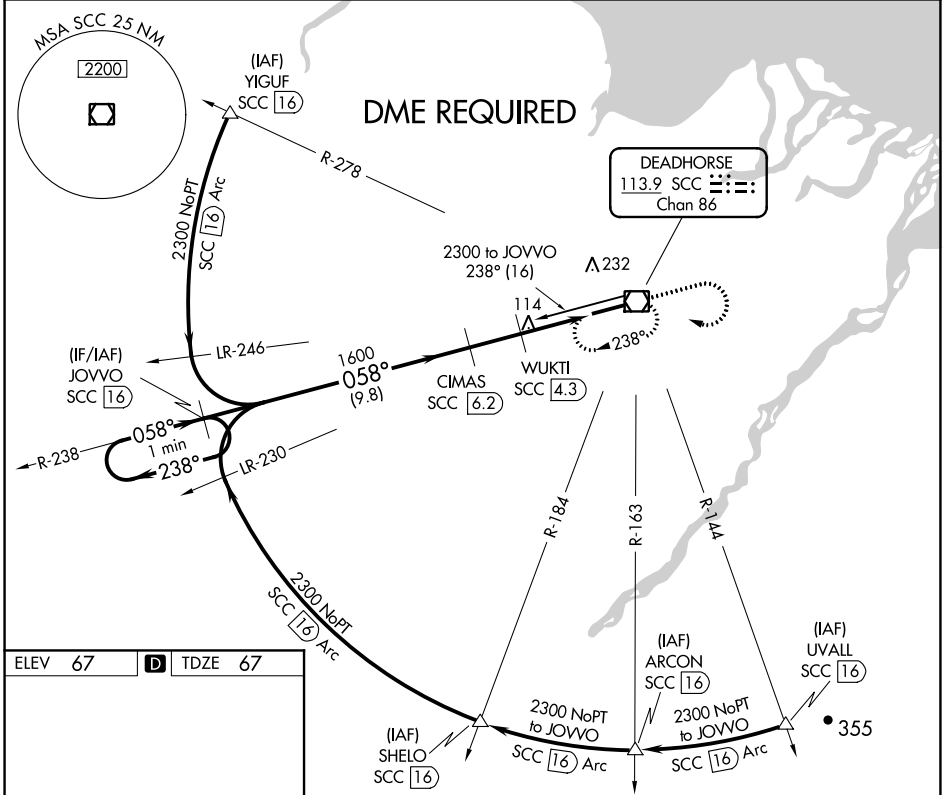
VOR/DME SCC <b>113.9</b> Chan <b>86</b>	APP CRS <b>058°</b>	Rwy Idg <b>6500</b> TDZE <b>67</b> Apt Elev <b>67</b>
---	------------------------	---

# VOR RWY 6

DEADHORSE (SCC) (PASC)

<p>DME required. For inop ALS, increase S-6 Cats C/D/E to RVR 4500.</p>	<p>MALSR</p>	<p>MISSED APPROACH: Climb to 1500 then climbing right turn to 2000 direct SCC VOR/DME and hold, continue climb-in-hold to 2000.</p>
---	--------------	---

AFIS <b>118.4</b>	ANCHORAGE CENTER <b>134.4 370.9</b>	DEADHORSE RADIO <b>123.6 (CTAF) 0</b>
----------------------	--	--



CATEGORY	A	B	C	D	E
S-6	380/24 313 (400-1/2)				
<b>C</b> CIRCLING	540-1	473 (500-1)	580-1 1/2 513 (600-1 1/2)	620-2	553 (600-2)

AK, 11 JUL 2024 to 05 SEP 2024

AK, 11 JUL 2024 to 05 SEP 2024