

DEADHORSE, ALASKA

AL-5776 (FAA)

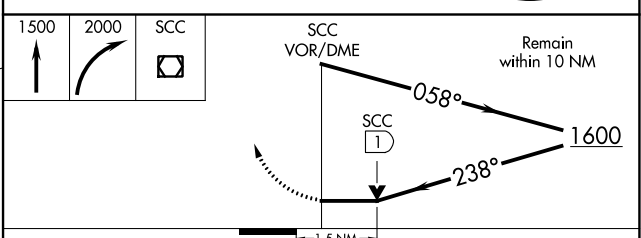
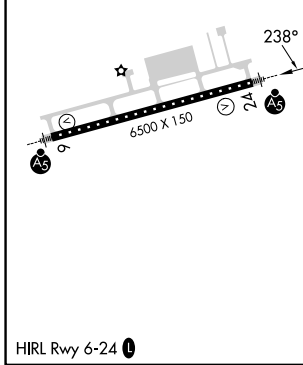
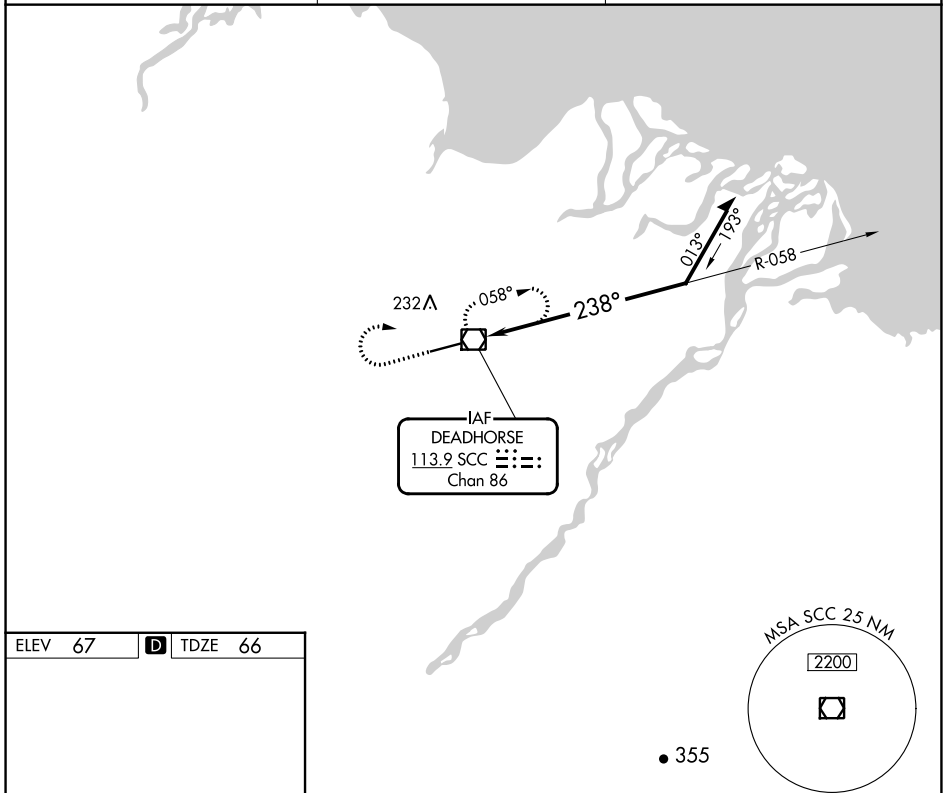
24081

VOR/DME SCC 113.9 Chan 86	APP CRS 238°	Rwy Idg TDZE Apt Elev	6500 66 67
---	------------------------	-----------------------------	---------------------------------------

VOR Y RWY 24

DEADHORSE (SCC) (PASC)

	MALSR	MISSED APPROACH: Climb to 1500 then climbing right turn to 2000 direct SCC VOR/DME and hold, continue climb-in-hold to 2000.
	AFIS 118.4	ANCHORAGE CENTER 134.4 370.9



CATEGORY	A	B	C	D
S-24	580/24	514 (600-1/2)	580/55	514 (600-1)
C CIRCLING	580-1	513 (600-1)	580-1 1/2 513 (600-1 1/2)	620-2 553 (600-2)

DEADHORSE, ALASKA
Amdt 6B 12OCT17

70°12'N-148°28'W

DEADHORSE (SCC) (PASC)

VOR Y RWY 24

AK, 11 JUL 2024 to 05 SEP 2024

AK, 11 JUL 2024 to 05 SEP 2024