

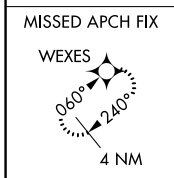
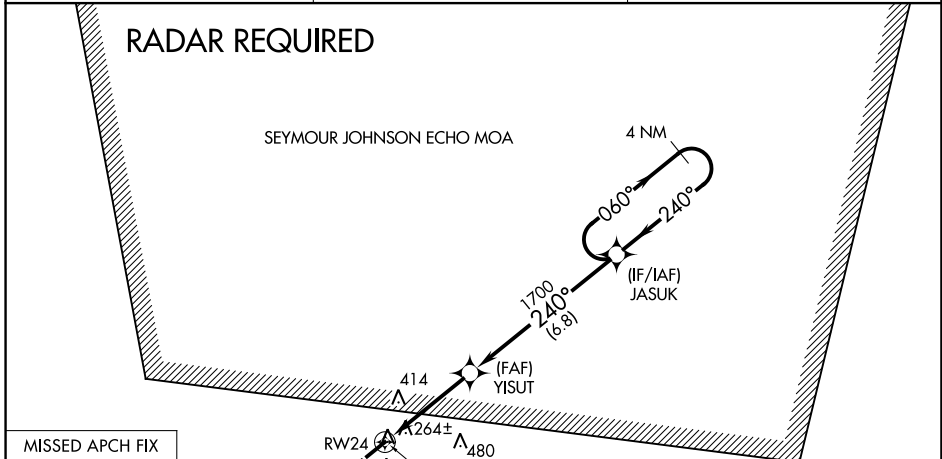
WAAS CH <b>82620</b> <b>W24A</b>	APP CRS <b>240°</b>	Rwy Idg TDZE Apt Elev	<b>5008</b> <b>144</b> <b>144</b>
----------------------------------------	------------------------	-----------------------------	-----------------------------------------

# RNAV (GPS) Z RWY 24

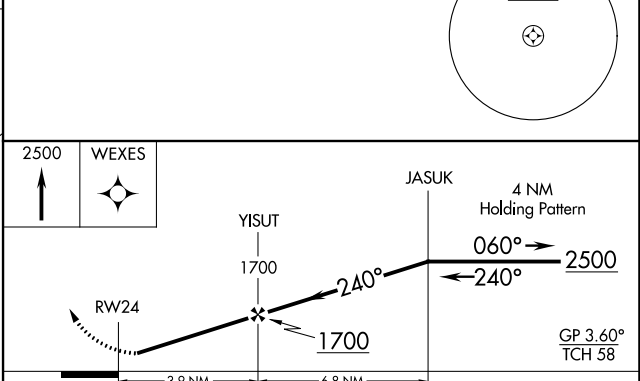
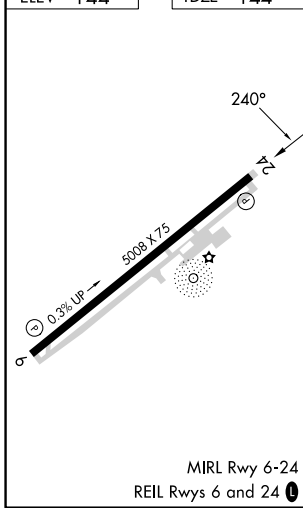
CLINTON-SAMPSON COUNTY (CTZ)

RNP APCH-GPS.	MISSED APPROACH: Climb to 2500 direct WEXES and hold.
<p>▼ Baro-VNAV NA when using Kenansville altimeter setting. For uncompensated Baro-VNAV systems, LNAV/VNAV NA below -15°C or above 46°C. When local altimeter setting not received, use Kenansville altimeter setting and increase all DA 45 feet, increase LNAV/VNAV Cats A/B/C visibility 1/8 mile. Rwy 24 helicopter visibility reduction below 3/4 SM NA.</p>	

AWOS-3 <b>119.125</b>	FAYETTEVILLE APP CON <b>133.0 290.25</b>	UNICOM <b>122.8 (CTAF) 0</b>
--------------------------	---------------------------------------------	---------------------------------



ELEV 144	TDZE 144
----------	----------



CATEGORY	A	B	C	D
LPV DA	470-1		326 (400-1)	NA
LNAV/VNAV DA	566-1 1/4		422 (500-1 1/4)	NA

SE-2, 11 JUL 2024 to 08 AUG 2024

SE-2, 11 JUL 2024 to 08 AUG 2024