

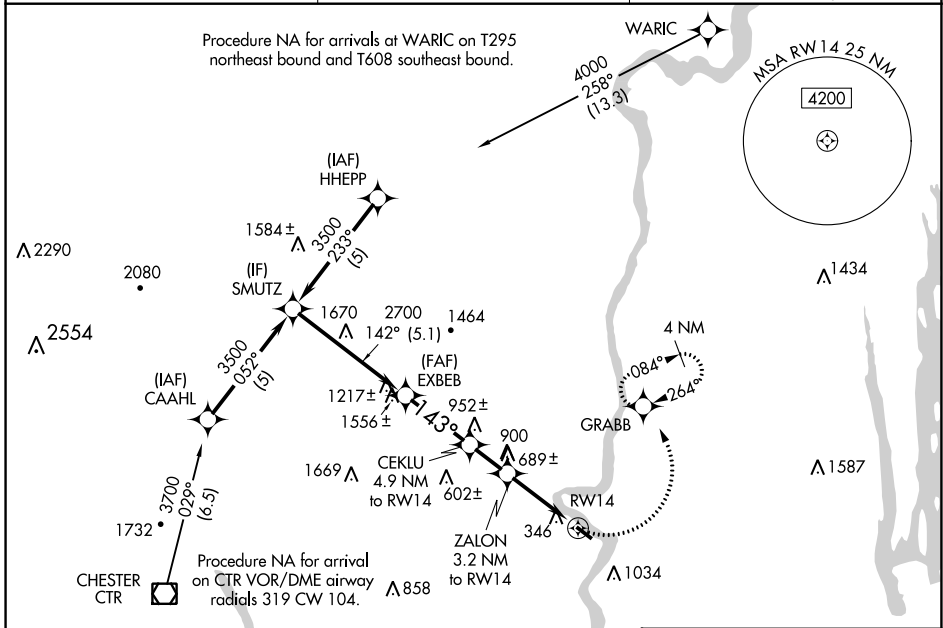
APP CRS	Rwy Idg	3335
143°	TDZE	121
	Apt Elev	121

RNAV (GPS) RWY 14

NORTHAMPTON (7B2)

RNP APCH - GPS.	<p>▼ Procedure NA at night. Obtain local altimeter setting on CTAF; when not received, use Windsor Locks altimeter setting. Rwy 14 helicopter visibility reduction below 1 SM NA.</p> <p>▲ NA</p>	<p>MISSED APPROACH: Climbing left turn to 3000 direct GRABB and hold, continue climb-in-hold to 3000.</p>
-----------------	---	---

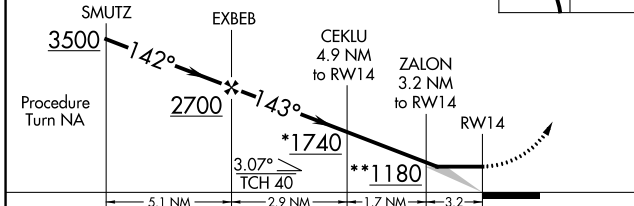
BRADLEY APP CON 125.35 281.5	CLNC DEL 133.6	UNICOM 122.7 (CTAF) 0
--	--------------------------	---------------------------------



NE-1, 11 JUL 2024 to 08 AUG 2024

NE-1, 11 JUL 2024 to 08 AUG 2024

<p>VGSI and descent angles not coincident (VGSI Angle 4.50/TCH 60). * 1820 when using Windsor Locks altimeter setting. ** 1260 when using Windsor Locks altimeter setting.</p>	<p>3000</p> <p>GRABB</p>	ELEV 121	TDZE 121
--	--------------------------	----------	----------



<p>143°</p> <p>3335 X 50</p> <p>0 33</p>	<p>MIRL Rwy 14-32 0</p>
--	-------------------------

CATEGORY	A	B	C	D
RNAV MDA	940-1 819 (900-1)	940-1¼ 819 (900-1¼)		NA
CIRCLING	940-1¼ 819 (900-1¼)	1400-1½ 1279 (1300-1½)		NA
WINDSOR LOCKS ALTIMETER SETTING MINIMUMS				
RNAV MDA	1020-1¼	899 (900-1¼)		NA
CIRCLING	1020-1¼ 899 (900-1¼)	1460-1½ 1339 (1400-1½)		NA