

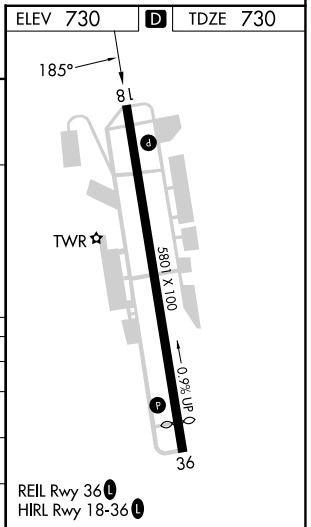
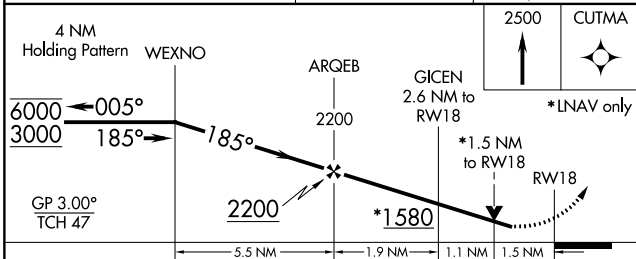
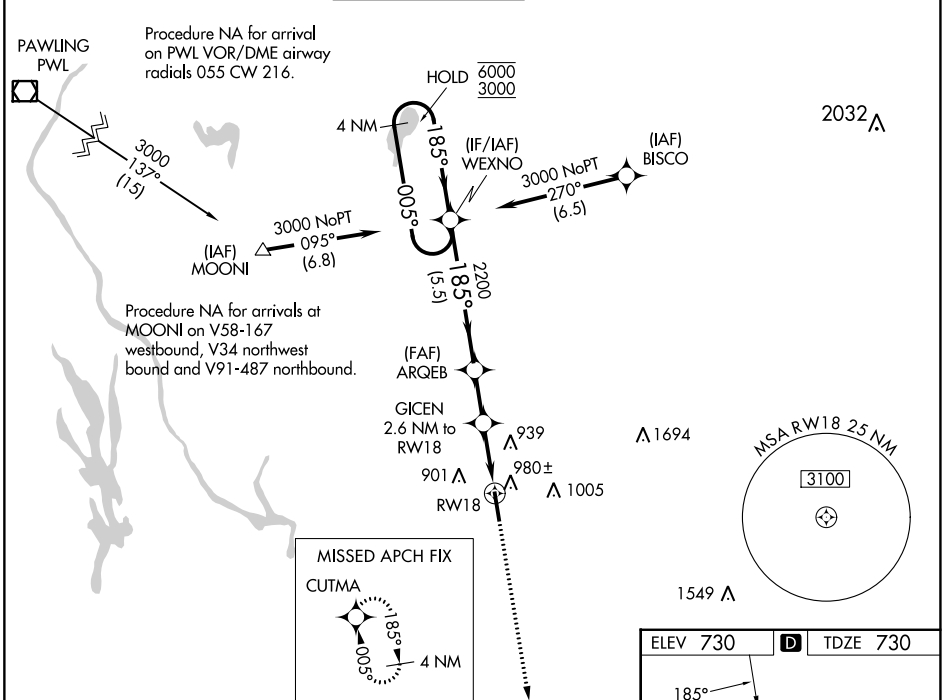
WAAS CH 42901 W18A	APP CRS 185°	Rwy Idg 5801 TDZE 730 Apt Elev 730
--	------------------------	---

RNAV (GPS) RWY 18

WATERBURY-OXFORD (OXC)

RNP APCH.		MISSED APPROACH: Climb to 2500 direct CUTMA and hold.	
<p>▼ Rwy 18 helicopter visibility reduction below 3/4 SM NA. ▲ For uncompensated Baro-VNAV systems, LNAV/VNAV NA below -16°C or above 54°C.</p>			

ATIS 132.975	NEW YORK APP CON 124.075 343.65	OXFORD TOWER★ 118.475 (CTAF) 0	GND CON 121.65	CLNC DEL 121.65	UNICOM 122.95
------------------------	---	--	--------------------------	---------------------------	-------------------------



CATEGORY	A	B	C	D
LPV DA	1140-1 1/8		410 (500-1 1/8)	
LNAV/VNAV DA	1141-1 1/8		411 (500-1 1/8)	
LNAV MDA	1240-1 510 (600-1)		1240-1 3/8 510 (600-1 3/8)	
CIRCLING	1300-1 570 (600-1)		1380-1 3/4 650 (700-1 3/4) 1460-2 1/4 730 (800-2 1/4)	

NE-1, 11 JUL 2024 to 08 AUG 2024

NE-1, 11 JUL 2024 to 08 AUG 2024