

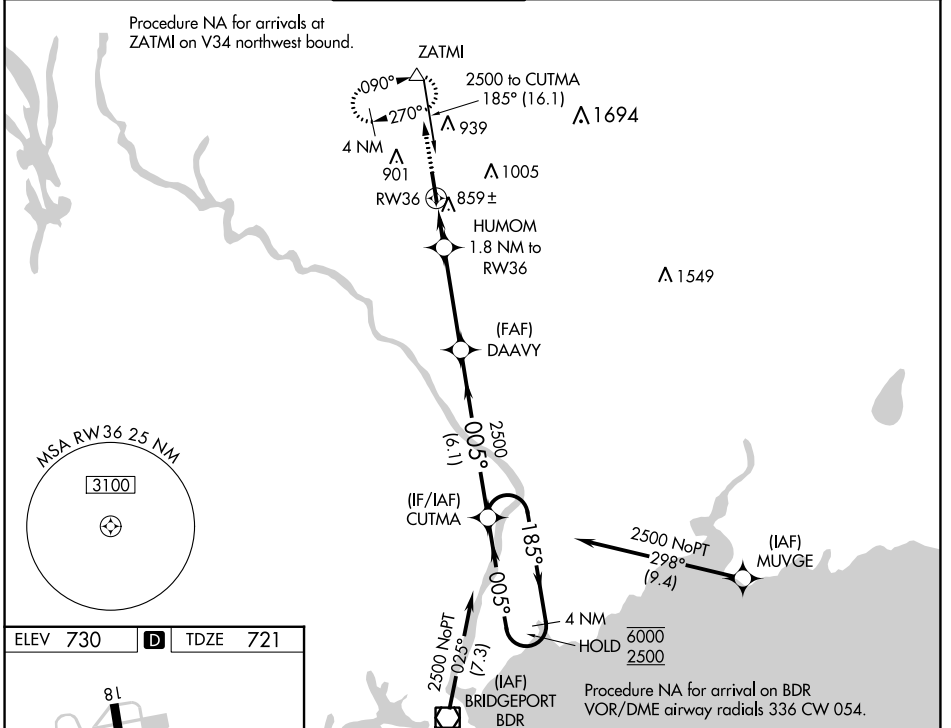
WAAS CH <b>72922</b> <b>W36A</b>	APP CRS <b>005°</b>	Rwy Idg <b>5301</b> TDZE <b>721</b> Apt Elev <b>730</b>
--	------------------------	---

# RNAV (GPS) RWY 36

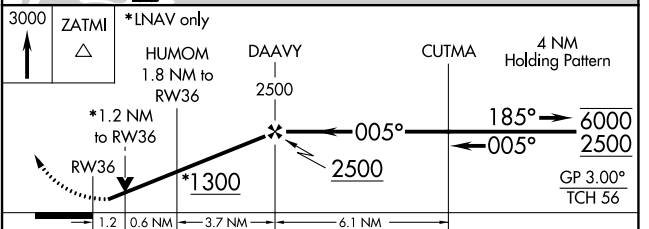
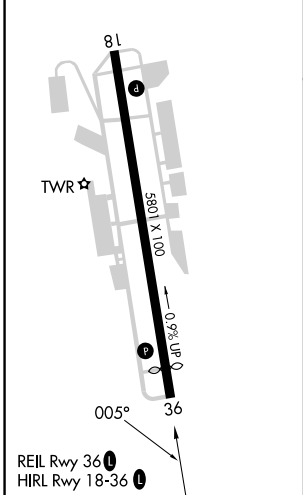
WATERBURY-OXFORD (OXC)

RNP APCH.		MISSED APPROACH: Climb to 3000 direct ZATMI and hold, continue climb-in-hold to 3000.	
<p><b>▼</b> Rwy 36 helicopter visibility reduction below 3/4 SM NA.</p> <p><b>▲</b> For uncompensated Baro-VNAV systems, LNAV/VNAV NA below -16°C or above 54°C.</p>			

ATIS <b>132.975</b>	NEW YORK APP CON <b>124.075 343.65</b>	<b>OXFORD TOWER ★</b> <b>118.475</b> (CTAF) <b>📻</b>	GND CON <b>121.65</b>	CLNC DEL <b>121.65</b>	UNICOM <b>122.95</b>
------------------------	---	---	--------------------------	---------------------------	-------------------------



ELEV 730	<b>D</b>	TDZE 721
----------	----------	----------



CATEGORY	A	B	C	D
LPV DA		971-3/4	250 (300-3/4)	
LNAV/VNAV DA		1097-1	376 (400-1)	
LNAV MDA	1120-1	399 (400-1)	1120-1 1/8	399 (400-1 1/8)
<b>C</b> CIRCLING	1300-1	570 (600-1)	1380-1 3/4 650 (700-1 3/4)	1460-2 1/4 730 (800-2 1/4)

NE-1, 11 JUL 2024 to 08 AUG 2024

NE-1, 11 JUL 2024 to 08 AUG 2024