

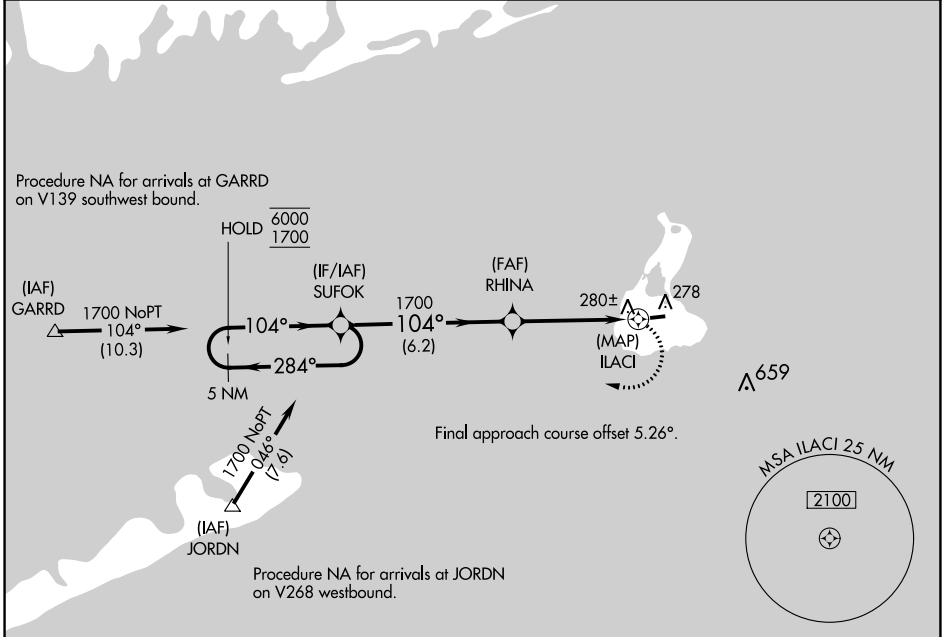
APP CRS 104°	Rwy Idg TDZE Apt Elev	2502 108 108
------------------------	-----------------------------	---

RNAV (GPS) RWY 10

BLOCK ISLAND STATE (BID)

RNP APCH. ▼ ▲ Rwy 10 helicopter visibility reduction below ¾ SM NA.		MISSED APPROACH: Climbing right turn to 1700 direct SUFOK and hold.	
---	--	---	--

AWOS-3PT 134.775	PROVIDENCE APP CON ★ 125.75 319.2	CLNC DEL 120.1	UNICOM 123.0(CTAF) 0
----------------------------	---	--------------------------	--------------------------------

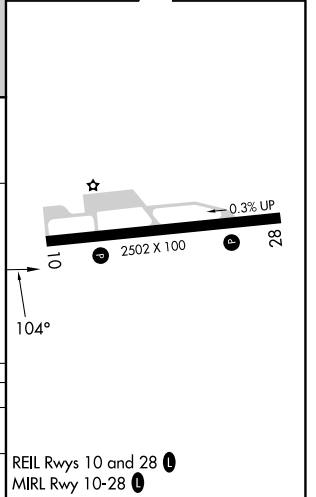


NE-1, 11 JUL 2024 to 08 AUG 2024

NE-1, 11 JUL 2024 to 08 AUG 2024

ELEV 108	TDZE 108
----------	----------

5 NM Holding Pattern	Visual Segment - Obstacles.		1700	SUFOK
	SUFOK	RHINA		
6000 1700	← 284°	→ 104°	1700	0.9 NM to ILACI
		6.2 NM	3.6 NM	0.9
CATEGORY	A	B	C	D
RNAV MDA	580-1	472 (500-1)	580-1 ½ 472 (500-1 ½)	NA
CIRCLING	640-1	532 (600-1)	640-1 ½ 532 (600-1 ½)	NA



REIL Rwy 10 and 28 0
MIRL Rwy 10-28 0