

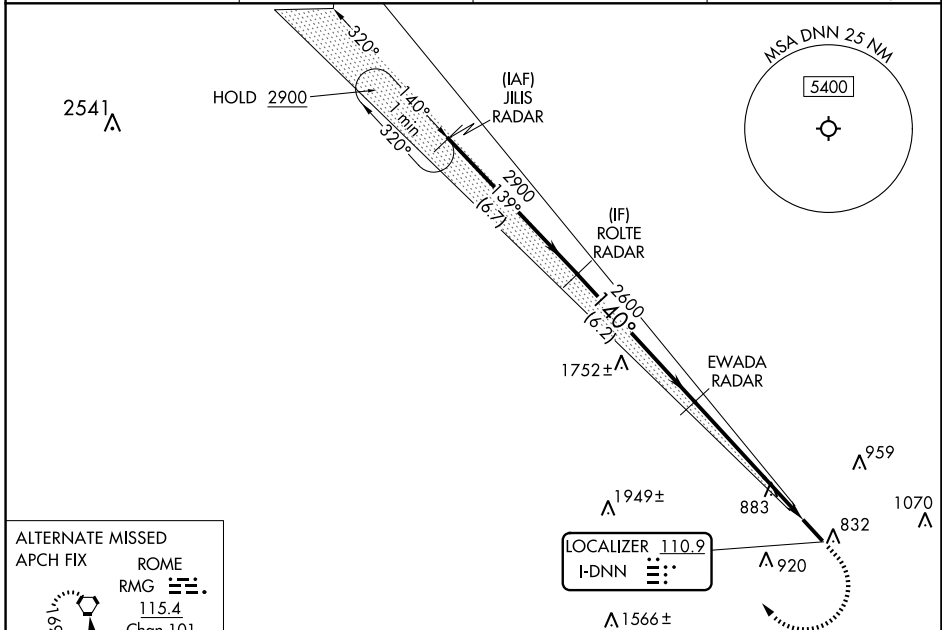
LOC I-DNN 110.9	APP CRS 140°	Rwy Idg TDZE Apt Elev	5496 709 709
---------------------------	------------------------	-----------------------------	---

ILS or LOC RWY 14

DALTON MUNI (DNN)

RNP APCH - GPS. RADAR required.	MALSR 	MISSED APPROACH: Climb to 1700 then climbing right turn to 3000 direct JILS and hold.
Circling to Rwy 32 NA at night. Autopilot coupled approach NA below 1200 MSL. Rwy 14 helicopter visibility reduction below 3/4 SM NA. Inop table does not apply to S-ILS 14. For inop ALS, increase S-LOC 14 Cat A/B visibility to 1 SM.		

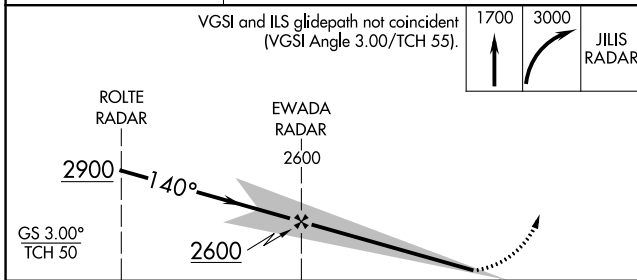
AWOS-3PT 127.65	CHATTANOOGA APP CON ★ 125.1 379.1	CLNC DEL 120.25	UNICOM 122.975 (CTAF)
---------------------------	---	---------------------------	---------------------------------



ALTERNATE MISSED APCH FIX

ROME
RMG
115.4
Chan 101

R-169



CATEGORY	A	B	C	D
S-ILS 14		1074-3/4	365 (400-3/4)	
S-LOC 14	1260-3/4	551 (600-3/4)	1260-1 1/8	551 (600-1 1/8)
CIRCLING	1260-1	551 (600-1)	1340-1 3/4 631 (700-1 3/4)	1420-2 1/4 711 (800-2 1/4)

ELEV 709	TDZE 709
----------	----------

140° 5490 x 100 0.3% UP

HIRL Rwy 14-32

FAF to MAP 5.8 NM					
Knots	60	90	120	150	180
Min:Sec	5:48	3:52	2:54	2:19	1:56

SE-4, 11 JUL 2024 to 08 AUG 2024

SE-4, 11 JUL 2024 to 08 AUG 2024