


WAAS CH 65801 W14A	APP CRS 140°	Rwy Idg TDZE Apt Elev	5496 709 709
--	------------------------	-----------------------------	---

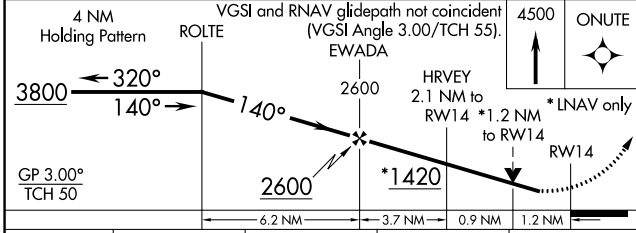
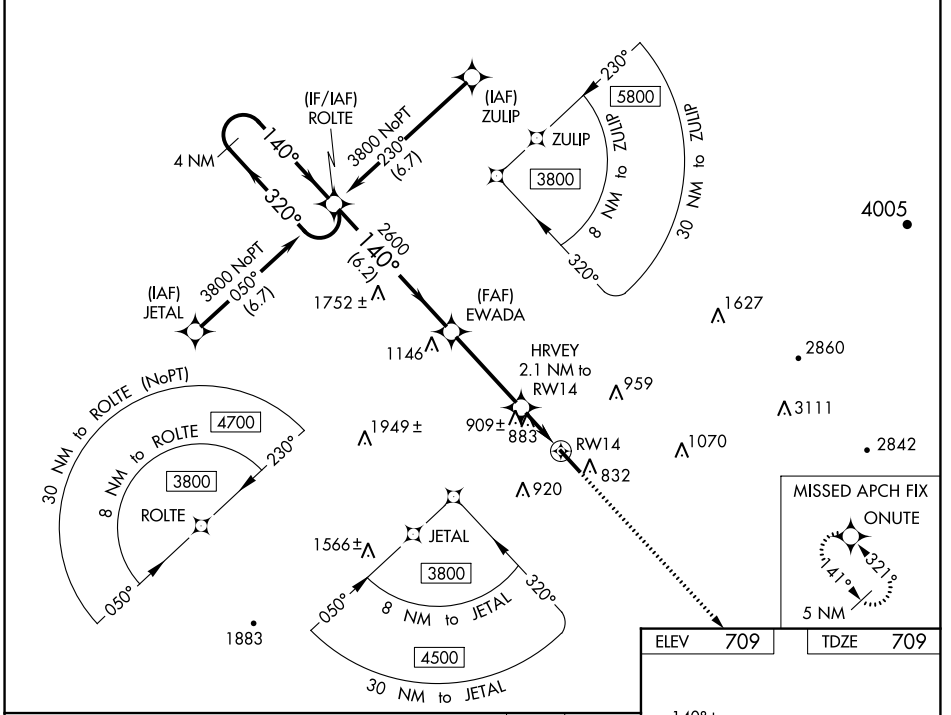
RNAV (GPS) RWY 14

DALTON MUNI (DNN)

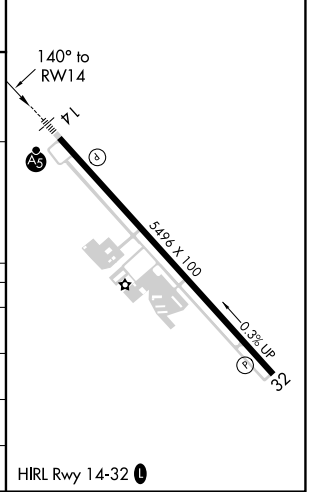
⚠ Circling to Rwy 32 NA at night. For uncompensated Baro-VNAV systems, LNAV/VNAV NA below -16°C (4°F) or above 54°C (130°F).
⚠ DME/DME RNP-0.3 NA. Rwy 14 helicopter visibility reduction below 3/4 SM NA. Inop table does not apply to LPV.

MALSR

MISSED APPROACH: Climb to 4500 direct ONUTE and hold, continue climb-in-hold to 4500.

AWOS-3PT 127.65	CHATTANOOGA APP CON ★ 125.1 379.1	CLNC DEL 120.25	UNICOM 122.975 (CTAF) 0
---------------------------	---	---------------------------	-----------------------------------



ELEV	709	TDZE	709
------	-----	------	-----



CATEGORY	A	B	C	D
LPV DA	959-3/4		250 (300-3/4)	
LNAV/VNAV DA	1173-1 1/8		464 (500-1 1/8)	
LNAV MDA	1160-3/4	451 (500-3/4)	1160-7/8	451 (500-7/8)
C CIRCLING	1220-1	511 (600-1)	1260-1 1/2 551 (600-1 1/2)	1420-2 1/4 711 (800-2 1/4)

HIRL Rwy 14-32 0

SE-4, 11 JUL 2024 to 08 AUG 2024

SE-4, 11 JUL 2024 to 08 AUG 2024