

LOC/DME I-ISM <b>109.75</b> Chan <b>34</b> (Y)	APP CRS <b>153°</b>	Rwy Idg TDZE Apt Elev	<b>6001</b> <b>82</b> <b>82</b>
--	------------------------	-----------------------------	---------------------------------------

# ILS or LOC RWY 15

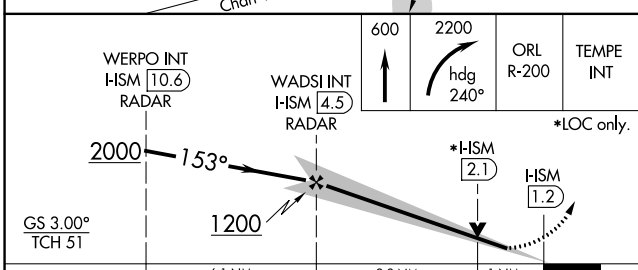
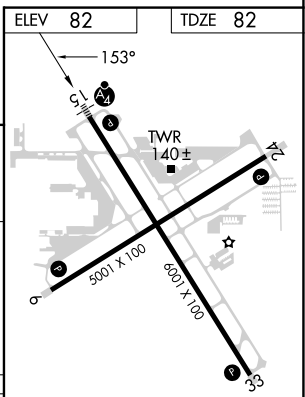
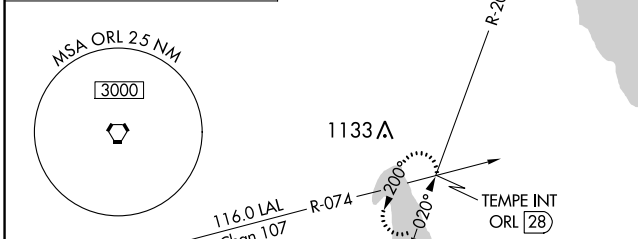
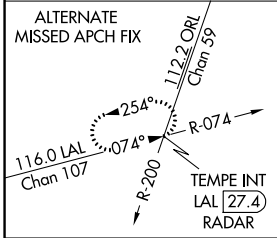
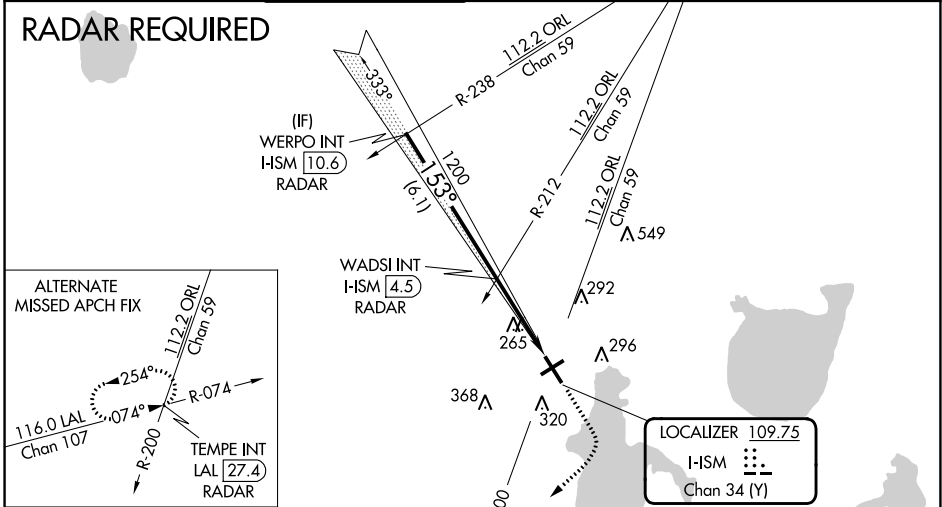
KISSIMMEE GATEWAY (ISM)

**⚠** VDP NA with Orlando Intl altimeter setting. When local altimeter setting not received, use Orlando Intl altimeter setting and increase all DA to 309 feet, and all MDA 40 feet; increase Circling Cat C visibility 1/2 SM.

**MALSF** MISSED APPROACH: Climb to 600 then climbing right turn to 2200 on heading 240° and ORL VORTAC R-200 to TEMPE INT/ORL 28 DME and hold.

ATIS <b>128.775</b>	ORLANDO APP CON <b>119.4 351.9</b>	KISSIMMEE TOWER * <b>124.45</b> (CTAF) <b>0</b>	CLNC DEL <b>121.7</b>	CLNC DEL <b>123.95</b> (when twr closed)	GND CON <b>121.7</b>	UNICOM <b>122.95</b>
------------------------	---------------------------------------	--	--------------------------	--	-------------------------	-------------------------

## RADAR REQUIRED



CATEGORY	A	B	C	D
S-ILS 15	282-3/4 200 (200-3/4)			
S-LOC 15	440-3/4 358 (400-3/4)		440-1/4 358 (400-1/4)	
CIRCLING	680-1 598 (600-1)		680-1 1/2 700-2 598 (600-1 1/2) 618 (700-2)	

REIL Rwy 6, 24 and 33 <b>0</b>					
MIRL Rwy 15-33 and 6-24 <b>0</b>					
FAF to MAP 3.3 NM					
Knots	60	90	120	150	180
Min:Sec	3:18	2:12	1:39	1:19	1:06

SE-3, 11 JUL 2024 to 08 AUG 2024

SE-3, 11 JUL 2024 to 08 AUG 2024