


| | | | |
|---------------------------|------------------------|-----------------------------|---|
| LOC I-BZQ 111.5 | APP CRS 320° | Rwy Idg TDZE Apt Elev | 5701 179 187 |
|---------------------------|------------------------|-----------------------------|---|


ILS or LOC RWY 32
STATESBORO-BULLOCH COUNTY (TBR)

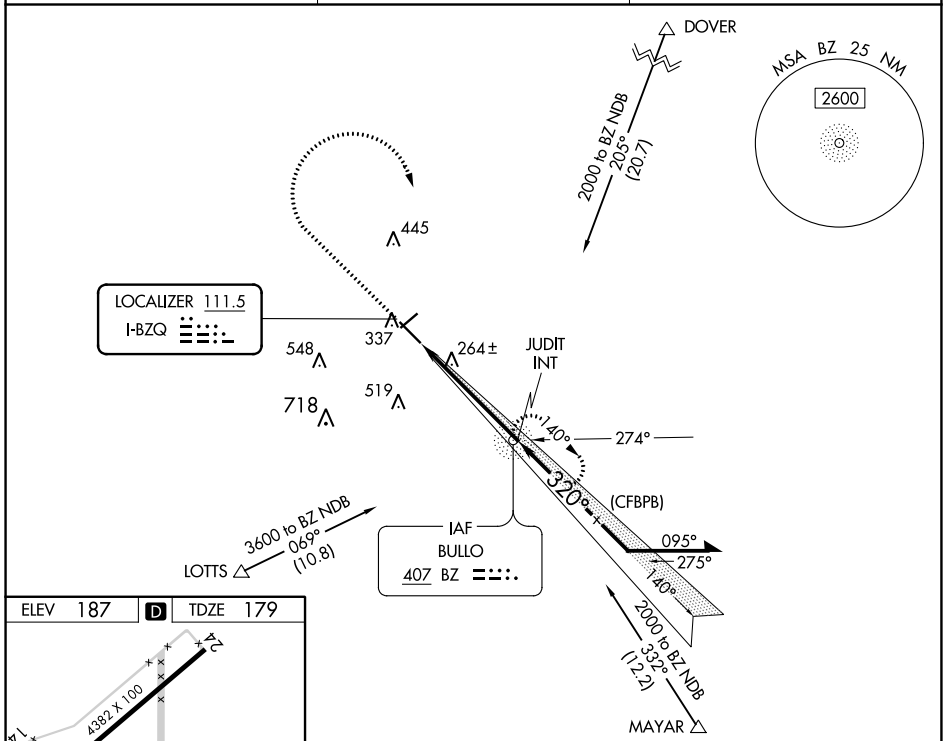
ADF required.

▲ Circling to Rwy 6/24 NA at night. When local altimeter setting not received, use Sylvania altimeter setting and increase S-ILS 32 DA to 408 feet; increase all MDAs 40 feet; and Circling visibility Cat C ¼ SM. For inop ALS, increase S-LOC 32 Cat C and D visibility to 1 SM.

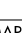
MALSR 

MISSED APPROACH: Climb to 1300 then climbing right turn to 2000 direct BZ NDB and hold.

| | | |
|--------------------------|--|---|
| AWOS-3 119.025 | SAVANNAH APP CON ★ 118.4 354.0 | UNICOM 122.725 (CTAF)  |
|--------------------------|--|---|

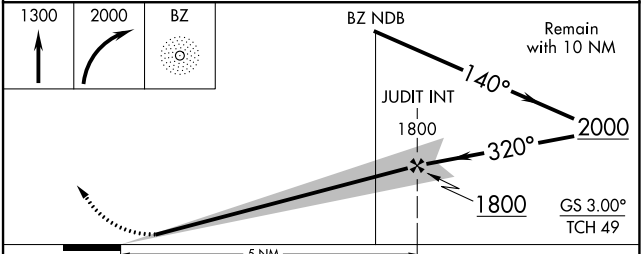


ELEV 187 **D** TDZE 179

HIRL Rwy 14-32 

FAF to MAP 5 NM

| | | | | | |
|---------|------|------|------|------|------|
| Knots | 60 | 90 | 120 | 150 | 180 |
| Min:Sec | 5:00 | 3:20 | 2:30 | 2:00 | 1:40 |



| CATEGORY | A | B | C | D |
|-------------------|-------------------|-----------------------|---------------------|---------------------|
| S-ILS 32 | 379-½ 200 (200-½) | | | |
| S-LOC 32 | 520-½ 341 (400-½) | 520-5/8 341 (400-5/8) | | |
| C CIRCLING | 640-1 453 (500-1) | 740-1 553 (600-1) | 840-1¾ 653 (700-1¾) | 860-2¼ 673 (700-2¼) |

SE-4, 11 JUL 2024 to 08 AUG 2024

SE-4, 11 JUL 2024 to 08 AUG 2024