

WAAS CH 81829 W32A	APP CRS 320°	Rwy Idg TDZE Apt Elev	5701 179 187
--	------------------------	-----------------------------	---

RNAV (GPS) RWY 32

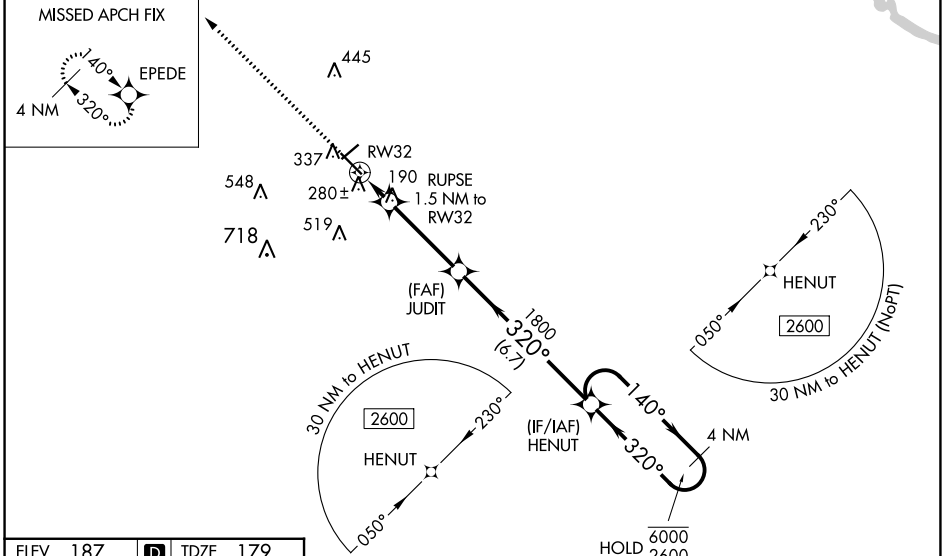
STATESBORO-BULLOCH COUNTY (TBR)

RNP APCH-GPS.

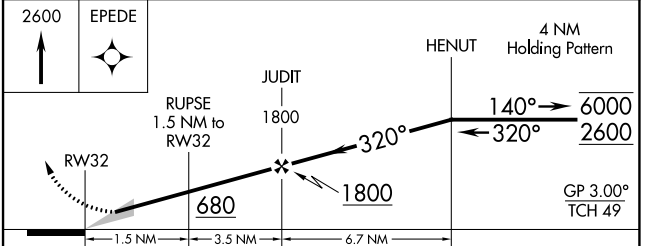
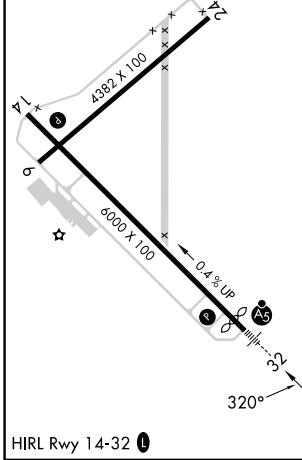
⚠ Circling to Rwy 6/24 NA at night. Baro-VNAV NA when using Sylvania altimeter setting. For uncompensated Baro-VNAV systems, LNAV/VNAV NA below -1.5°C or above 54°C. For inop ALS. Increase LNAV/VNAV all Cats visibility to ¾ SM and LNAV Cats C/D to 1½ SM. When local altimeter setting not received. Use Sylvania altimeter setting and increase LPV DA to 408 feet; increase LNAV/VNAV DA to 490 feet; increase all MDAs 40 feet and LNAV visibility Cat C/D ½ SM, and Circling visibility Cat C ¼ SM. For inop ALS when using Sylvania altimeter setting, increase LNAV/VNAV all Cats visibility to ¾ SM and LNAV Cat C/D to 1½ SM.

MALSRL
MISSED APPROACH: Climb to 2600 direct EPEDE and hold.

AWOS-3 119.025	SAVANNAH APP CON* 118.4 354.0	UNICOM 122.725 (CTAF) 0
--------------------------	---	-----------------------------------



ELEV 187	D	TDZE 179
----------	----------	----------



CATEGORY	A	B	C	D
LPV DA	379-½		200 (200-½)	
LNAV/VNAV DA	461-½		282 (300-½)	
LNAV MDA	540-½		540-⅝ 361 (400-⅝)	
C CIRCLING	640-1 453 (500-1)	740-1 553 (600-1)	840-1¾ 653 (700-1¾)	860-2¼ 673 (700-2¼)

SE-4, 11 JUL 2024 to 08 AUG 2024

SE-4, 11 JUL 2024 to 08 AUG 2024