

LOC I- STC	APP CRS	Rwy Idg	7000
111.9	313°	TDZE	1020
		Apt Elev	1031

ILS or LOC RWY 31

ST CLOUD RGNL (STC)

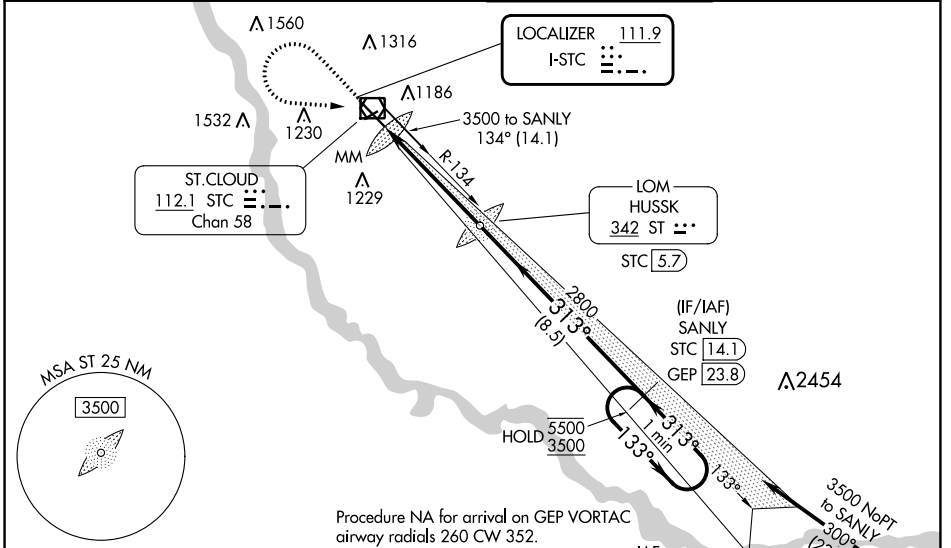
DME required.

NA When local altimeter setting not received, use Little Falls altimeter setting, increase DA to 1296 feet, increase all MDAs 80 feet and S-LOC13 visibility Cats C and D ¼ SM, and Circling visibility Cats C and D ¼ SM. For inop ALS when using Little Falls altimeter setting, increase S-ILS-31 visibility to ¾ SM and S-LOC-31 Cats C and D visibility to 1¾ SM. VDP NA when using Little Falls altimeter setting. DME from STC VOR/DME. DME use requires simultaneous reception of I-STC and STC DME.

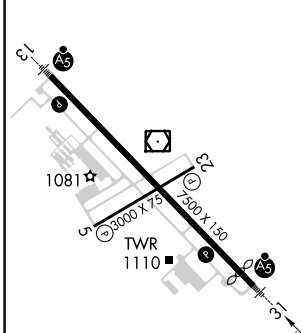
MALSR
AS

MISSED APPROACH: Climb to 2800 then climbing left turn to 3500 direct STC VOR/DME and on STC VOR/DME R-134 to SANLY/STC VOR/DME 1.4.1 DME and hold.

ATIS 119.375	MINNEAPOLIS CENTER 121.05 235.775	ST. CLOUD TOWER* 118.25 (CTAF)	GND CON 123.75
-------------------------------	--	---	---------------------------------



ELEV 1031	D	TDZE 1020
-----------	----------	-----------

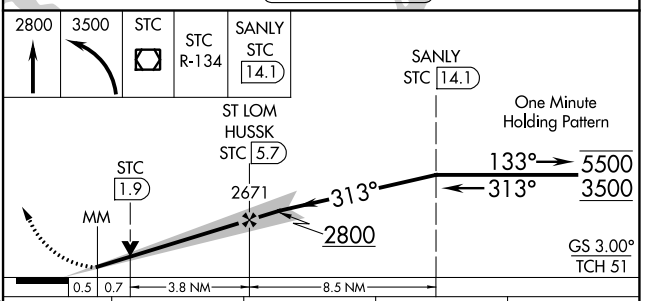


MIRL Rwy 5-23

HIRL Rwy 13-31

FAF to MAP 5 NM

Knots	60	90	120	150	180
Min:Sec	5:00	3:20	2:30	2:00	1:40



CATEGORY	A	B	C	D
S-ILS 31	1220-½		200 (200-½)	
S-LOC 31	1460-½ 440 (500-½)		1460-¾ 440 (500-¾)	
CIRCLING	1500-1 469 (500-1)		1620-1½ 829 (900-2¾)	

NC-1, 11 JUL 2024 to 08 AUG 2024

NC-1, 11 JUL 2024 to 08 AUG 2024