

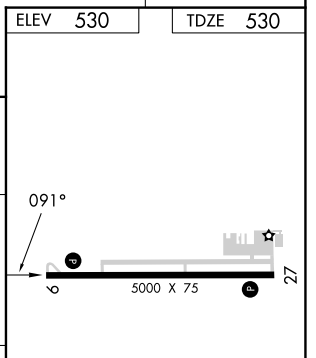
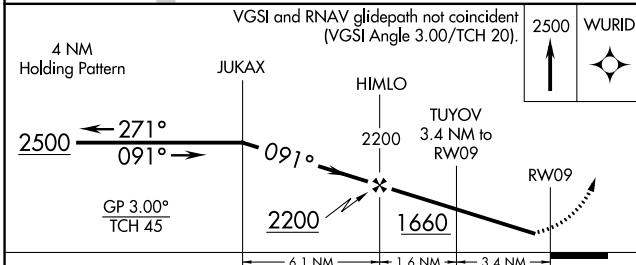
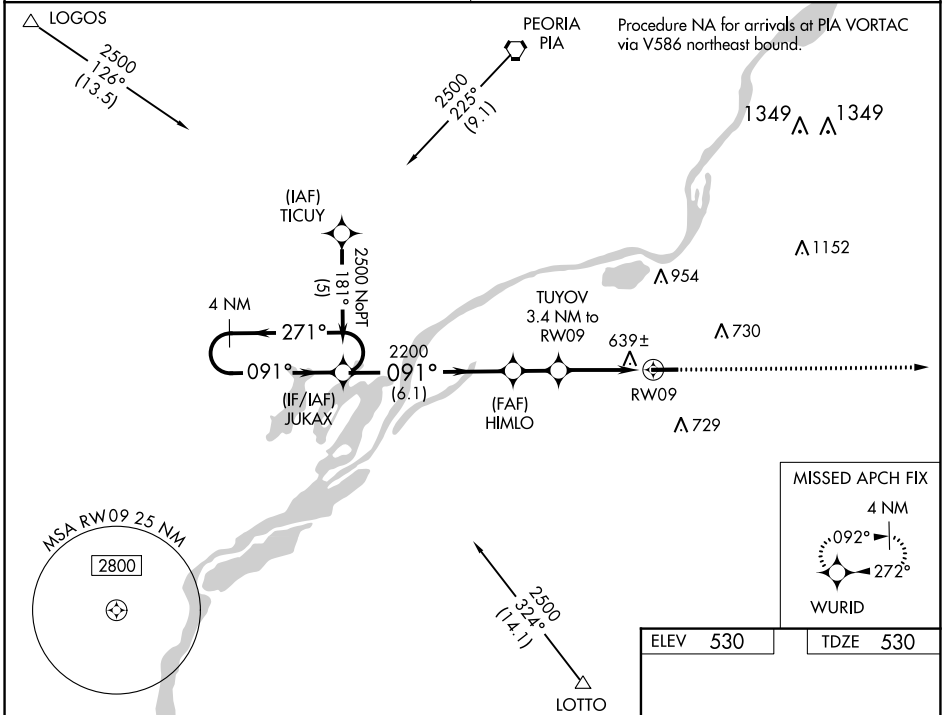
| | | | |
|--|------------------------|-----------------------------|---|
| WAAS CH 53509 W09A | APP CRS 091° | Rwy Idg TDZE Apt Elev | 5000 530 530 |
|--|------------------------|-----------------------------|---|

RNAV (GPS) RWY 9

PEKIN MUNI (C15)

| | | |
|--------------|---|---|
| RNP APCH-GPS | Baro-VNAV NA. Rwy 9 helicopter visibility reduction below 3/4 SM NA. Use General Downning - Peoria Intl altimeter setting; when not received, use Lincoln glimeter setting; increase LPV DA to 887 feet; increase LNAV/VNAV DA to 1007 feet; increase all MDAs 40 feet and visibility Cat C and D 1/4 SM. | MISSED APPROACH: Climb to 2500 direct WURID and hold. |
|--------------|---|---|

| | |
|---|-------------------------------|
| SAINT LOUIS APP CON 125.8 269.2 | UNICOM 122.8 (CTAF) |
|---|-------------------------------|



| | | | | |
|--------------|--------------------|-----------|----------------------------|----------------------------|
| CATEGORY | A | B | C | D |
| LPV DA | | 862-1 | 332 (400-1) | |
| LNAV/VNAV DA | | 982-1 3/8 | 452 (500-1 1/8) | |
| LNAV MDA | 940-1 410 (500-1) | | 940-1 1/8 410 (500-1 1/8) | |
| CIRCLING | 1060-1 530 (600-1) | | 1100-1 1/2 570 (600-1 1/2) | 1360-2 3/4 830 (900-2 3/4) |

REIL Rwy 9 and 27

MIRL Rwy 9-27

EC-3, 11 JUL 2024 to 08 AUG 2024

EC-3, 11 JUL 2024 to 08 AUG 2024