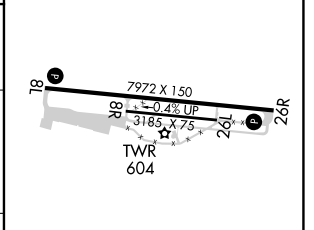
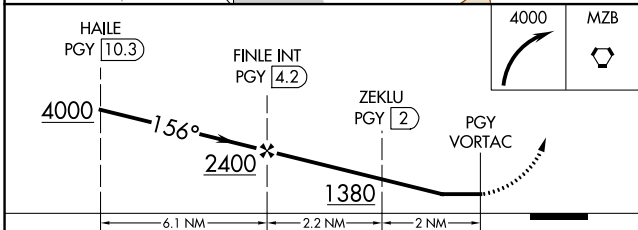
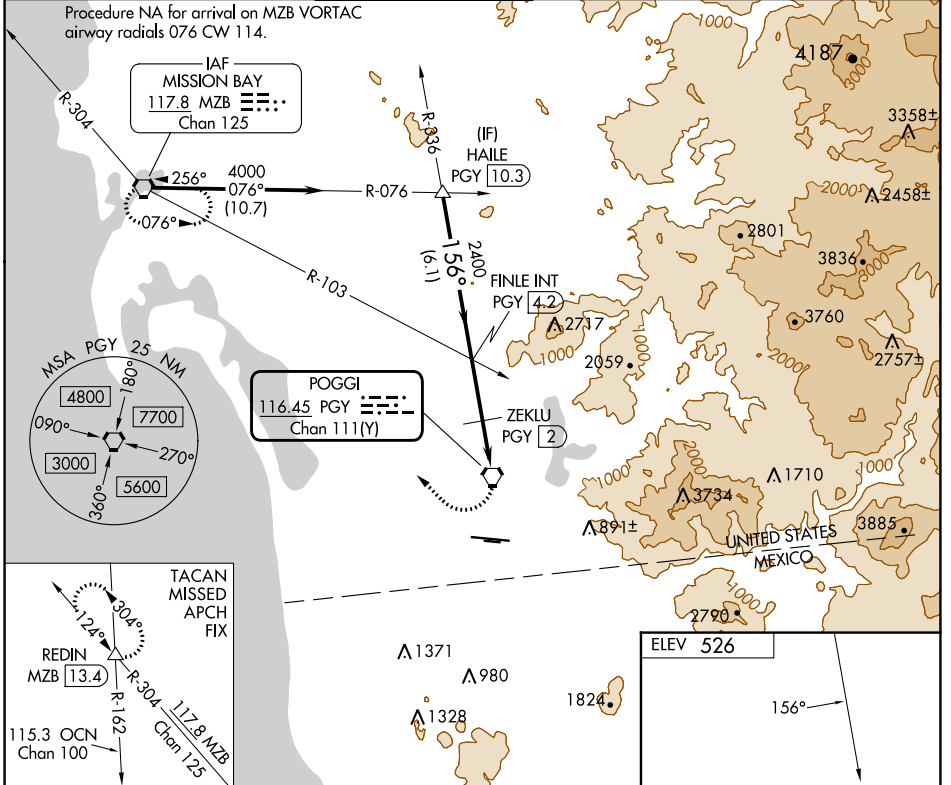


VORTAC PGY <b>116.45</b> Chan <b>111 (Y)</b>	APP CRS <b>156°</b>	Rwy Idg TDZE Apt Elev <b>N/A</b> <b>N/A</b> <b>526</b>
--	------------------------	---

# VOR or TACAN-A

BROWN FLD MUNI (SDM)

Circling NA south of Rwy 8R-26L.		MISSED APPROACH: Climbing right turn 4000 to MZB VORTAC and hold. (TACAN aircraft continue on MZB VORTAC R-304 to REDIN INT/MZB VORTAC 13.4 DME and hold NW, LT, 124° inbound)			
ATIS <b>132.35</b>	SOCAL APP CON <b>124.35 279.625</b>	<b>BROWN TOWER *</b> <b>128.25 (CTAF) 225.4</b>	GND CON <b>124.4</b>	CLNC DEL <b>124.4</b>	UNICOM <b>122.95</b>



CATEGORY	A	B	C	D
CIRCLING	1380-2 <sup>3</sup> / <sub>4</sub>	854 (900-2 <sup>3</sup> / <sub>4</sub> )		2260-3 1734 (1800-3)
ZEKLU FIX MINIMUMS (DME REQUIRED)				
CIRCLING	1140-2 <sup>3</sup> / <sub>4</sub>	614 (700-2 <sup>3</sup> / <sub>4</sub> )	1340-2 <sup>3</sup> / <sub>4</sub> 814 (900-2 <sup>3</sup> / <sub>4</sub> )	2260-3 1734 (1800-3)

REIL Rwy 26R  
 REIL Rwy 8L   
 MIRL Rwy 8R-26L   
 HIRL Rwy 8L-26R

SW-3, 11 JUL 2024 to 08 AUG 2024

SW-3, 11 JUL 2024 to 08 AUG 2024