

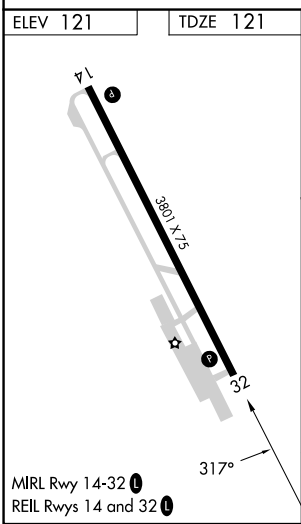
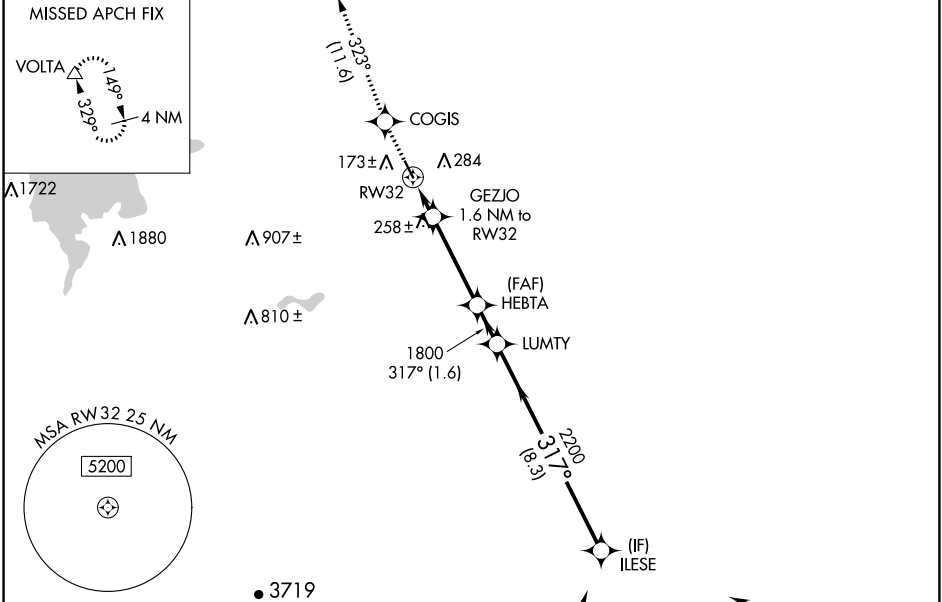
APP CRS 317°	Rwy Idg 3801 TDZE 121 Apt Elev 121
------------------------	---

RNAV (GPS) RWY 32

LOS BANOS MUNI (LSN)

RNP APCH.	<p>▼ Rwy 32 helicopter visibility reduction below 3/4 SM NA. VDP NA when using Merced Yosemite Rgnl altimeter setting. When local altimeter setting not received, use Merced Yosemite Rgnl altimeter setting and increase all MDA 60 feet, and all visibility 1/4 SM.</p> <p>▲ NA MISSED APPROACH: Climb to 3000 direct COGIS and on track 323° to VOLTA and hold.</p>
-----------	--

AWOS-3 118.675	NORCAL APP CON 120.95 269.45	UNICOM 122.8 (CTAF) 0
--------------------------	--	---------------------------------



3000	COGIS	tr 323°	VOLTA	ILESE
	GEZJO	HEBTA	LUMTY	ILESE
	1.1 NM to RW32	1.6 NM to RW32		
		3.00° TCH 38		
	680	1800	2200	3600
	1.1 NM	0.5 NM	3.6 NM	1.6 NM
			8.3 NM	
CATEGORY	A	B	C	D
LNAV MDA	520-1	399 (400-1)	520-1 1/8	399 (400-1 1/8)

SW-2, 11 JUL 2024 to 08 AUG 2024

SW-2, 11 JUL 2024 to 08 AUG 2024